

BETTER FIT | BETTER FEEL | BETTER COMFORT | BETTER CRAFTSMANSHIP | BETTER WASH | BETTER WEAR

BETTER PREPARED TO RESPOND

FIRST
TACTICAL

2025
FULL-LINE
CATALOG



INTRODUCING AERO - TAC.
THIS BOOT IS LIGHT AS ★#!
SEE BACK COVER FOR DETAILS

**100% COMMITTED TO
PUBLIC SAFETY PROFESSIONALS**

BUILDING

BETTER

A MESSAGE FROM THE FIRST TACTICAL TEAM

The responsibilities of First Responders demand physical, emotional, spiritual, and intellectual readiness at levels far beyond most professions.

To serve and protect is more than a duty; it's a calling. The breadth and depth of skills required leave no room for compromise.

At First Tactical, we embrace this same principle, designing and manufacturing apparel, footwear, and gear in direct partnership with these professionals.

Every feature, form, and function is meticulously crafted to exceed expectations under the most demanding conditions—empowering Public Safety Professionals to defend, attack, pursue, provide, rescue, react, serve, and survive with confidence.

Share your pics and follow us @firsttactical



G A R A N D

TABLE OF CONTENTS

LE APPAREL	4-25
FIRE & EMS APPAREL	26-35
OUTERWEAR	36-41
ACCESSORIES	42-47
BAGS, PACK, & POUCHES	48-63
FOOTWEAR	66-72



V2
FABRIC

ABRASION RESISTANT **MICRO RIPSTOP**

6.4 oz., 65% Polyester / 35% Cotton micro ripstop blend. This rigorously tested durable fabric meets the demands of tough missions



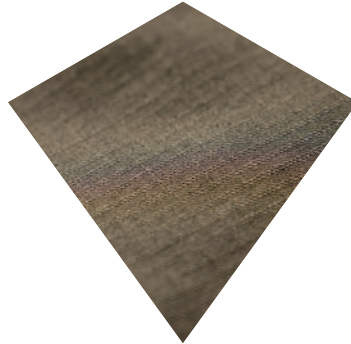
**2-WAY
STRETCH**



Unique fiber blend enables greater stretch, making it perfect for carrying gear.



**DOUBLE-
DYED**



Double-dyed fabric preserves color integrity for more than 50 washes.



**DWR
FINISH**



PFAS-Compliant DWR finish repels water and protects you from the elements.



V2 TACTICAL PANT

TRUSTED BY PROFESSIONALS

A performance-focused tactical pant built for precision, comfort, and durability. Carry what you need without the bulk, in pants that adapt to every mission

V2
FABRIC

2-WAY
STRETCH

DOUBLE-
DYED

DWR
FINISH

TAA
COMPLIANT

ALSO IN WOMEN'S FIT

114011 MEN'S V2 TACTICAL PANT

124011 WOMEN'S V2 TACTICAL PANT

FEATURES

- 360 Degree comfort stretch waist
- 2 Exterior magazine/utility pockets
- Triple stitched on all main seams
- Hand pockets reinforced with nylon
- Knee to knee running gusset for maximum movement
- Geometrically shaped internal knee pad pockets
- Clip garage secures your knife clip
- Prym® snap/YKK® zipper
- PFAS COMPLIANT

Men's Waist: 28-44 (hemmed), 28-60 (unhemmed) Length: 30-36

Women's: 0-28 Regular- 2-28 Tall

019 Black	055 Khaki	830 OD Green	729 Midnight Navy	036 Wolf Grey
182 Kodiak Brown	812 Spruce Green	181 Coyote Brown	610 Ranger Green	



142501 INTERNAL KNEE PADS



115000 MEN'S V2 TACTICAL SHORT

125000 WOMEN'S V2 TACTICAL SHORT

FEATURES

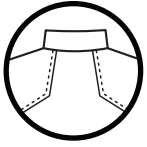
- Same features as V2 Tactical Pant (without knee pad pockets)
- 11" inseam
- PFAS COMPLIANT

Men's: 28-54 / Women's: 0-20

019 Black	055 Khaki	830 OD Green	729 Midnight Navy
036 Wolf Grey	182 Kodiak Brown	181 Coyote Brown	610 Ranger Green



MAXIMUM MOBILITY FOR UNRESTRICTED MOVEMENT



SPLIT BACK YOKE
FOR FULL RANGE
OF MOTION



V2 RESPONDER SHIRT

BALANCED & BREATHABLE

Designed to serve as a standalone or layered piece, ensuring versatile use across different climates and operational needs.

V2
FABRIC

2-WAY
STRETCH

DOUBLE-
DYED

DWR
FINISH

TAA
COMPLIANT

ALSO IN WOMEN'S FIT

- 111031 MEN'S V2 RESPONDER LS SHIRT
- 121031 WOMEN'S V2 RESPONDER LS SHIRT
- 112024 MEN'S V2 RESPONDER SS SHIRT
- 122024 WOMEN'S V2 RESPONDER SS SHIRT

FEATURES

- Body: 100% Polyester anti-snap jersey with moisture wicking and antimicrobial finish
- Sleeves and collar: 4.1 oz, 65% Polyester/35% Cotton, 2-way mechanical stretch micro ripstop
- YKK® zip up collar
- Zip-secured sleeve pockets with loop overlay and built-in pen pocket
- PFAS COMPLIANT

Men's: S-4XL Regular, L-4XL Tall

Women's: XS-XXL Regular

019
Black

729
Midnight
Navy

830
OD
Green

065
Silver
Tan



A2
FABRIC

HIGH-PERFORMANCE MICRO-CANVAS

6.5 oz., 67% Polyester / 33% Cotton canvas blend. Abrasion-resistant 90-degree canvas weave



2-WAY
STRETCH



Unique fiber blend enables greater stretch, making it perfect for carrying gear.



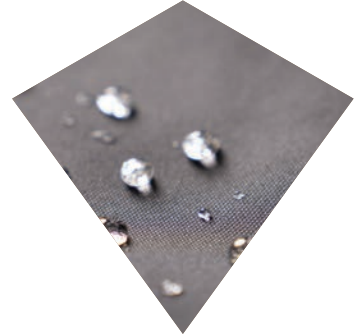
DOUBLE-
DYED



Double-dyed fabric preserves color integrity for more than 50 washes.



DWR
FINISH



PFAS-Compliant DWR finish repels water and protects you from the elements.



A2 PANT

BETTER FLEX, BETTER FEEL

With superior stretch, durability, and clean, professional styling, this pant is ready to move when you are.

A2
FABRIC


2-WAY
STRETCH


DOUBLE-
DYED


DWR
FINISH


TAA
COMPLIANT

ALSO IN WOMEN'S FIT

114038* MEN'S A2 PANT

124038 WOMEN'S A2 PANT

FEATURES

- 360 Degree comfort stretch waist
- 6 Mesh pockets for breathability
- 2 Discrete zippered cargo pockets with a rain cover to shield belongings from the elements
- Oversized utility pockets for large cell phone storage
- 7 Fused belt loops with 4 bartacks to prevent kit from pulling
- Knee to knee running gusset for maximum movement
- Clip garage secures your knife clip
- PFAS COMPLIANT

Men's Waist: 28-44, 28-54 (unhemmed) Length: 30-36
Women's: 0-20 Regular- 2-20 Tall

115007 MEN'S A2 SHORT

125007 WOMEN'S A2 SHORT

- Same features as A2 Pant
- 11" inseam
- PFAS COMPLIANT

Men's: 28-54 / Women's: 0-20

019
Black

055
Khaki

830
OD
Green

729
Midnight
Navy

036
Wolf
Grey

181
Coyote
Brown

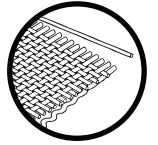
610
Ranger
Green

A2 SHORT

Oversized utility pockets
and discreet zipper
cargo pockets
for all your
gear



CLASSIC LOOK, MODERN PERFORMANCE



2-WAY
MECHANICAL
STRETCH



V2 PRO DUTY™ UNIFORM PANT

NEAT, CLEAN, & PROFESSIONAL

Combines the traditional Class A appearance with the modern functionality needed for fieldwork, giving professionals a versatile uniform solution.

ALSO IN WOMEN'S FIT



114041 MEN'S V2 PRO DUTY™ 6 POCKET PANT
 124041 WOMEN'S V2 PRO DUTY™ 6 POCKET PANT

FEATURES

- 360 Degree comfort stretch waist with a silicone gripper keeps your shirt securely tucked
- Welled zipper cargo pockets with lanyard loops
- Hand pockets reinforced with nylon
- Welled back pockets with button closure
- Knee to knee running gusset for maximum movement
- Triangle hand pocket bartack with coin holder stitching inside pocket bag
- Permanent interior Supercrease® Lintrak™ to maintain a professional appearance
- PFAS COMPLIANT

Men's Waist: 28-54, Length: 30-36, 28-54 Unhemmed
 Women's: 0-20 Regular, 2-20 Tall, 0-20 Unhemmed

019 Black	830 OD Green	729 Midnight Navy
182 Kodiak Brown	812 Spruce Green	610 Ranger Green

114018 MEN'S V2 PRO DUTY™ 4 POCKET PANT
 124018 WOMEN'S V2 PRO DUTY™ 4 POCKET PANT

FEATURES

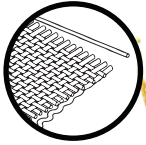
- Same features as V2 Pro Duty™ 6 Pocket Pant minus the zippered thigh pockets
- PFAS COMPLIANT

Men's Waist: 28-44, Length: 30-36, 28-54 Unhemmed
 Women's: 0-20 Regular, 2-20 Tall, 0-20 Unhemmed

019 Black	830 OD Green	729 Midnight Navy	182 Kodiak Brown
--------------	-----------------	----------------------	---------------------



PROFESSIONALISM THAT NEVER FADES



2-WAY
MECHANICAL
STRETCH



V2 PRO DUTY™ UNIFORM SHIRT

EVERYDAY CLASS A

Designed for a commanding and polished look, combining traditional uniform style with modern comfort and practicality.

V2
FABRIC


2-WAY
STRETCH


DOUBLE-
DYED


DWR
FINISH


TAA
COMPLIANT

ALSO IN WOMEN'S FIT

- 111011 MEN'S V2 PRO DUTY UNIFORM LS SHIRT
- 121011 WOMEN'S V2 PRO DUTY UNIFORM LS SHIRT
- 112001 MEN'S V2 PRO DUTY UNIFORM SS SHIRT
- 122001 WOMEN'S V2 PRO DUTY UNIFORM SS SHIRT

FEATURES

- 2 x 2mm micro ripstop with 2-way mechanical stretch
- Double dyed fabric locks in the color
- Durable melamine button front placket with hidden YKK® locking zipper
- No curl collar integrated collar stays and satin lined neck band
- Sewn in epaulettes and stitched pintucks
- Mic access at side seams
- Hook/loop chest pockets
- Mesh lined back yoke for ventilation
- Camera loop and badge tab kit included
- PFAS COMPLIANT

Men's: S-4XL Reg, S-2XL Short, L-6XL Tall
Women's: XS-3XL Regular

019 Black	729 Midnight Navy	484 French Blue
065 Silver Tan	812 Spruce Green	010 White



DYNAMIC DUTY WEAR



V2 PRO PERFORMANCE SHIRT

BETTER FUNCTION, BETTER FIELD USE

A unique design combining our V2 Tactical Shirt and our Performance Polo for improved versatility in the field.

V2
FABRIC


2-WAY
STRETCH


DOUBLE-
DYED


DWR
FINISH


TAA
COMPLIANT

ALSO IN WOMEN'S FIT

- 111015 MEN'S V2 PRO PERFORMANCE LS SHIRT
- 121015 WOMEN'S V2 PRO PERFORMANCE LS SHIRT
- 112012 MEN'S V2 PRO PERFORMANCE SS SHIRT
- 122012 WOMEN'S V2 PRO PERFORMANCE SS SHIRT

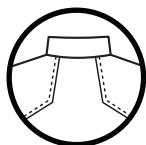
FEATURES

- No curl collar with integrated collar stay
- Split back yoke for full range of motion
- Button front placket
- Woven sleeves
- Anti-snag performance jersey body
- Running gusset for maximum movement
- Durable melamine buttons
- Internal ID bar
- PFAS COMPLIANT

Men's: XS-4XL Reg, L-4XL Tall

Women's: XS-XXL Regular

010 White	019 Black	055 Khaki	830 OD Green	729 Midnight Navy
036 Wolf Grey	182 Kodiak Brown	812 Spruce Green	065 Silver Tan	484 French Blue



**SPLIT BACK YOKE
FOR FULL RANGE
OF MOTION**



INNOVATION & EXPERTISE

COMMITTED TO FEMALE FIT AND COMFORT

Diane Gallagher's (above left) reputation as a pioneer in tactical apparel is well-earned; she's made it her life's work to create gear that fits the female silhouette without compromise. Leading our design team with over 20 years of expertise, Diane helped shape the future of tactical wear at First Tactical.

Our drive for innovation and purpose-built functionality has transformed our product line, culminating in our latest introduction: the V2 Tactical Maternity Pant. This new piece embodies our commitment to designing apparel that adapts to every stage of a professional's career.

First Tactical Design Team: Diane, Merrick, Mona, Lauren



Our custom shop sewing a patch with precision and care.



Designers refining every detail for the perfect fit.

V2 TACTICAL MATERNITY PANT

UNCOMPROMISING COMFORT

Our V2 Tactical Pant reengineered with a 4-way stretch knit panel that keeps expecting mothers comfortable and professional.



124011M WOMEN'S V2 TACTICAL MATERNITY PANT

FEATURES

- V2 Fabric Technology with two-way mechanical stretch and 2mm x 2mm micro ripstop
- Double dyed fabric
- DWR water repellent finish
- 4-Way stretch knit panel with elastic waist
- 2 Exterior utility pockets with interior nylon divider pockets
- Triple needle stitched on all main seams
- PFAS COMPLIANT

Women's: 2-28 Regular and Tall

019 Black	729 Midnight Navy	830 OD Green
610 Ranger Green	812 Spruce Green	055 Khaki



Quality, consistency, and the professionalism you deserve.

V2 BDU SHIRT & PANT

TRADITION MEETS PRECISION

Get the rugged reliability of the traditional Battle Dress Uniform with the advanced comfort and flexibility of the V2 line.

ALSO IN WOMEN'S FIT



- 111008 MEN'S V2 BDU LS SHIRT
- 112009 MEN'S V2 BDU SS SHIRT
- 121008 WOMEN'S V2 BDU LS SHIRT
- 122009 WOMEN'S V2 BDU SS SHIRT

FEATURES

- Concealed button-down collar
- Hidden oversized document pocket
- Geometrically shaped internal elbow pad pockets
- Running gusset for maximum movement
- Mic access at side seams
- Mesh lined back yoke for ventilation
- Longer body stays tucked
- PFAS COMPLIANT

Men's: XS-4XL Regular, L-4XL Tall
Women's: XS-XXL



- 114012 MEN'S V2 BDU PANT
- 124012 WOMEN'S V2 BDU PANT

- 360 Degree comfort stretch waist
- Mil-Spec cargo pockets with internal organizer
- Triple needle stitched on all main seams
- Hand pockets reinforced with nylon
- Knee to knee running gusset for maximum movement
- Geometrically shaped internal knee pad pockets
- Prym® snap/YKK® zipper
- PFAS COMPLIANT

Men's Waist: 28-44, Length: 30-36, 28-54 Unhemmed
Women's: 0-20 Regular - 2-20 Tall



V2 TACTICAL SHIRT

HIGH PERFORMANCE

Designed to complement our best-selling V2 Tactical Pant, this shirt incorporates classic tactical elements with a modern fit.

V2
FABRIC


2-WAY
STRETCH


DOUBLE-
DYED


DWR
FINISH


TAA
COMPLIANT

ALSO IN WOMEN'S FIT

- 111006 MEN'S V2 TACTICAL LS SHIRT
- 121006 WOMEN'S V2 TACTICAL LS SHIRT
- 112007 MEN'S V2 TACTICAL SS SHIRT
- 122007 WOMEN'S V2 TACTICAL SS SHIRT

FEATURES

- Concealed button-down collar
- Hidden oversized document pocket
- Geometrically shaped internal elbow pad pockets
- Running gusset for maximum movement
- Mic access at side seams
- Mesh lined back yoke for ventilation
- Longer body stays tucked
- PFAS COMPLIANT



Men's: XS-4XL Regular, L-4XL Tall, Women's: XS-XXL Regular
* 122007: Women's: XS-4XL Regular Midnight Navy ONLY

010 White	019 Black	055 Khaki	830 OD Green	729 Midnight Navy
610 Ranger Green	036 Wolf Grey	182 Kodiak Brown	083 Nickel Grey	812 Spruce Green

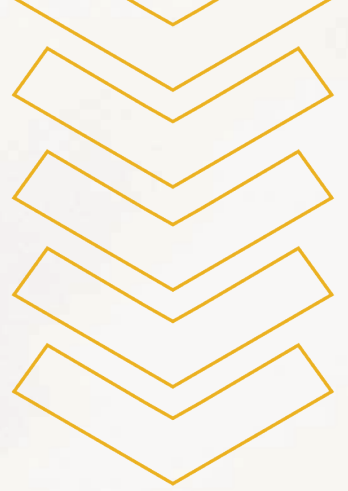


142500 INTERNAL ELBOW PADS



NO MELT NO DRIP STRETCH NYCO DOUBLE RIPSTOP FABRIC

ALSO IN WOMEN'S FIT



27
POCKETS

MEETS AND EXCEEDS
DEFENDER FABRIC
NO MELT - NO DRIP
CONSTRUCTION
ASTM 6413d STANDARDS



142504 DEFENDER ELBOW PADS



142502 DEFENDER KNEE PADS

DEFENDER SHIRT & PANT

ELITE GEAR FOR ELITE MISSIONS

Designed for those who demand the absolute best, featuring unparalleled durability, advanced mobility, and a professional look for high-stakes operations.

- 111004 MEN'S DEFENDER LS SHIRT
- 121004 WOMEN'S DEFENDER LS SHIRT
- 112017 MEN'S DEFENDER SS SHIRT
- 122017 WOMEN'S DEFENDER SS SHIRT

FEATURES



- YKK® zip up collar
- Split back yoke for full range of motion
- Zip-secured sleeve pockets with loop overlay and built-in pen pocket
- Geometrically shaped internal elbow pad pockets
- Snag proof running side gussets
- No Melt - No Drip sleeves
- PFAS COMPLIANT



Men's: XS-4XL Regular, L-4XL Tall
 Women's: XS-XXL / 019 Black, 830 OD Green, 729 Midnight Navy Only



- 114002 MEN'S DEFENDER PANT
- 124002 WOMEN'S DEFENDER PANT

FEATURES

- Comfort flex action waist
- Reinforced belt loops at sides and center back
- AR mag/tool, knife clip, and tourniquet pockets
- Venting throughout
- Knee to knee running gusset for maximum movement
- Geometrically shaped internal knee pad pockets
- PFAS COMPLIANT

Men's Waist: 28-44, Length: 30-36, 46-54 Unhemmed
 Women's: 0-20 Regular, 2-20 Tall / 019 Black,
 830 OD Green, 729 Midnight Navy Only



111004MC MEN'S DEFENDER LS SHIRT - MULTICAM®
 S-4XL Regular, L-4XL Tall

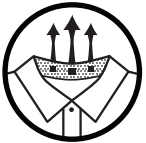
112017MC MEN'S DEFENDER SS SHIRT - MULTICAM®
 S-4XL Regular, L-4XL Tall

114002MC MEN'S DEFENDER PANT - MULTICAM®
 Men's Waist: 28-44, Length: 30-36, 46-54 Unhemmed



“ LOOKS PROFESSIONAL ALL DAY LONG—NO FADING, NO SHRINKING, AND NO SNAGS.”

“ IT’S TOUGH, IT’S BREATHABLE, AND IT’S RELIABLE ”



VENTED COLLAR FOR AIRFLOW



MESH VENTED UNDER ARM



PERFORMANCE POLOS

BETTER COMFORT, BETTER DURABILITY

A hard-working, comfortable, and breathable polo that keeps you looking professional and feeling cool all day long, no matter where you are.



2-WAY
STRETCH



DWR
FINISH



TAA
COMPLIANT

- 111503 MEN'S PERFORMANCE LS POLO
- 121503 WOMEN'S PERFORMANCE LS POLO
- 112509 MEN'S PERFORMANCE SS POLO
- 122509 WOMEN'S PERFORMANCE SS POLO

ALSO IN WOMEN'S FIT



FEATURES

- Lightweight, breathable perforated fabric at side gussets
- Fade, shrink, snag and wrinkle resistant
- Integrated collar stays to prevent curling
- Reinforced pen pocket
- Running gusset for maximum movement
- Longer body stays tucked
- Mic loops at bottom of center front placket
- Durable melamine buttons
- PFAS COMPLIANT

Men's: S-6XL Regular, L-6XL Tall

Women's: XS-3XL

010 White	019 Black	036 Wolf Grey	015 Asphalt	400 Red	729 Midnight Navy	691 Academy Blue
484 French Blue	781 Medium Blue	830 OD Green	812 Spruce Green	055 Khaki	065 Silver Tan	182 Kodiak Brown





PERFORMANCE TRAINING SHIRT

STAY COOL, STAY CONFIDENT

Keep cool, comfortable, and dry during even the toughest of training sessions, thanks to its superior fabric and athletic fit.



MOISTURE
WICKING



TAA
COMPLIANT

112503 MEN'S PERFORMANCE TRAINING SS T-SHIRT

FEATURES

- 100% Polyester micro pique
- Moisture-wicking, antimicrobial finish
- No-roll stretch rib collar
- Saddle shoulder and flatback seams for comfort
- Running gusset for maximum movement
- Tagless neck label to prevent irritation
- Fully customizable
- PFAS COMPLIANT

Men's: S-3XL (S-4XL in 019 only)

010 White	019 Black	036 Wolf Grey	400 Red
729 Midnight Navy	830 OD Green		

111504 MEN'S PERFORMANCE TRAINING LS T-SHIRT

- Same features as Performance Training SS T-Shirt
- PFAS COMPLIANT

Men's: S-3XL (S-4XL in 019 only)

019 Black	729 Midnight Navy	830 OD Green
--------------	-------------------------	--------------------



MOISTURE WICKING ANTI-MICROBIAL

TACTIX COTTON T-SHIRT

BETTER FIBER, BETTER FEEL

Unbeatable comfort and durability, engineered with premium cotton that holds up through every shift.

ALSO IN WOMEN'S FIT



- 112501 MEN'S TACTIX COTTON SS T-SHIRT (XS-6XL)
- 122501 WOMEN'S TACTIX COTTON SS T-SHIRT
- 111505 MEN'S TACTIX COTTON LS T-SHIRT (XS-6XL)
- 121505 WOMEN'S TACTIX COTTON LS T-SHIRT



FEATURES

- 100% cotton jersey knit, fade and shrink resistant
- No-roll stretch rib collar
- Longer body stays tucked
- Tagless neck label to prevent irritation
- PFAS COMPLIANT

Men's: XS-5XL, Women's: XS-XXL



- 112511 MEN'S TACTIX COTTON SS WITH SLEEVE POCKET (XS-4XL)
- 111508 MEN'S TACTIX COTTON LS WITH SLEEVE POCKET (XS-4XL)
- 121508 WOMEN'S TACTIX COTTON LS WITH SLEEVE POCKET
- 111510 MEN'S TACTIX COTTON LS WITH CHEST POCKET (XS-4XL)
- 121510 WOMEN'S TACTIX COTTON LS WITH CHEST POCKET
- 112521 MEN'S TACTIX COTTON SS WITH CHEST POCKET (XS-4XL)
- 122521 WOMEN'S TACTIX COTTON SS WITH CHEST POCKET

Men's: S-4XL, Women's: XS-XXL





TACTIX COTTON PT SHORT

BUILT FOR TRAINING

ALSO IN WOMEN'S FIT

Designed to perfectly complement the Tactix Tee, these shorts are comfortable, fade-resistant, and fit seamlessly into your training routine.



115008 MEN'S TACTIX COTTON SHORTS
125008 WOMEN'S TACTIX COTTON SHORTS

FEATURES

- 100% cotton jersey knit, fade and shrink resistant
- Elastic waist with adjustable drawstring
- Side pockets
- 8" inseam
- PFAS COMPLIANT

Men's: S-3XL, Women's: XS-XXL

019 Black	016 Heather Grey	729 Midnight Navy
--------------	------------------------	-------------------------



COTTON STATION SHIRT

ALL-DAY COMFORT

Built for comfort, professionalism, and long-lasting durability-making it a must-have for firehouse duty.

ALSO IN WOMEN'S FIT



- 112008 MEN'S COTTON STATION SS SHIRT
- 122008 WOMEN'S COTTON STATION SS SHIRT
- 111009 MEN'S COTTON STATION LS SHIRT
- 121009 WOMEN'S COTTON STATION LS SHIRT

FEATURES

- 4.76 oz, 100% Tough Cotton™ fabric
- Satin-lined neck band
- Stitched pintucks
- Durable melamine button front placket with hidden YKK® locking zipper
- Hook/loop chest pockets
- Epaulette, mic holder, badge tab kit included
- PFAS COMPLIANT

Men's: S-XXL Short, S-4XL Regular

Women's: XS-3XL Regular

010
White

729
Midnight
Navy

781
Medium
Blue



COTTON STATION PANT

RUGGED COTTON, LASTING COLOR

Built to keep you moving comfortably whether you're at the station or out on a call—No fading, no shrinking, and no giving out on you when the pressure's on.

ALSO IN WOMEN'S FIT



114024 MEN'S COTTON STATION PANT
124024 WOMEN'S COTTON STATION PANT

FEATURES

- 100% Tough Cotton™ fabric
- Comfort stretch waistband with a silicone gripper keeps your shirt securely tucked
- Knee to knee running gusset for maximum movement
- Welted back pockets with button closure
- Prym® snap/YKK® zipper
- PFAS COMPLIANT

Men's Waist: 28-54, L: 30-36, 26-54 Unhemmed
Women's: 0-20 Regular, 2-20 Tall, 0-20 Unhemmed

115005 MEN'S COTTON STATION SHORT
125005 WOMEN'S COTTON STATION SHORT

- Same features as Cotton Station Pant
- 11" inseam
- PFAS COMPLIANT

114030 MEN'S CARGO COTTON STATION PANT
124030 WOMEN'S CARGO COTTON STATION PANT

- Same features as Cotton Station Pant with 2 additional cargo pockets and 2 additional utility pockets
- PFAS COMPLIANT

115006 MEN'S CARGO COTTON STATION SHORT
125006 WOMEN'S CARGO COTTON STATION SHORT

- Same features as Cargo Cotton Station Pant
- 11" inseam
- PFAS COMPLIANT

729
Midnight
Navy

CARGO COTTON STATION SHORT

100% Tough Cotton™ fabric with reinforced stitching



COTTON JOB SHIRT

DAILY, RELIABLE COMFORT

Soft yet durable cotton job shirt with a professional look, fleece lining, and convenient pockets.

ALSO IN WOMEN'S FIT

TAA
COMPLIANT

118507 MEN'S COTTON JOB SHIRT 1/4 ZIP

128507 WOMEN'S COTTON JOB SHIRT 1/4 ZIP

FEATURES

- Heavy-duty 80% Cotton/20% Polyester fleece
- YKK® zip up collar
- Easily accessible mic loops at shoulders
- Dropped front yoke with chest and pen pockets
- Underarm gussets with for maximum movement
- Durable ripstop elbow patch minimize abrasion points
- Fully customizable
- PFAS COMPLIANT

Men's: 019: S-5XL Regular, L-4XL Tall

Men's: 729: XS-4XL Regular, L-5XL Tall

Women's: XS-XXL

019
Black

729
Midnight
Navy



COTTON POLO

SOFT FEEL, CLASSIC DESIGN

A professional-grade polo with soft cotton fabric, a stay-flat collar, and utility pen pocket.

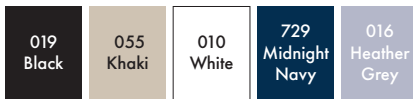


- 112508 MEN'S COTTON SS POLO (S-4XL)
- 122508 WOMEN'S COTTON SS POLO
- 111502 MEN'S COTTON LS POLO (729 ONLY)
- 121502 WOMEN'S COTTON LS POLO (729 ONLY)

FEATURES

- Fade and shrink resistant cotton
- Running side gussets for maximum movement
- Longer body stays tucked
- Integrated collar stays to prevent curling
- Mic loops at shoulders and bottom of center front placket
- Reinforced pen pocket
- Durable melamine buttons
- PFAS COMPLIANT

Men's: S-4XL, Women's: XS-XXL



ALSO IN WOMEN'S FIT



VENTED COLLAR
FOR AIRFLOW



**"THEY FIT COMFORTABLY,
AND FEEL GREAT!" - A.B.**



V2 EMS PANT

BETTER FIT, BETTER FUNCTION

Purpose-built EMS pants with reinforced knees, stretch fabric, and specialized pockets for ultimate performance under pressure.

V2
FABRIC


2-WAY
STRETCH


DOUBLE-
DYED


DWR
FINISH


TAA
COMPLIANT

ALSO IN WOMEN'S FIT

114013 MEN'S V2 EMS PANT

124013 WOMEN'S V2 EMS PANT

FEATURES

- 360 Degree comfort stretch waist
- Hand pockets reinforced with nylon
- Knee to knee running gusset for maximum movement
- Large capacity tool organizer cargo pocket with additional nylon reinforced pockets
- Geometrically shaped internal knee pad pockets
- Lower leg pockets with hook/loop flap closure
- Prym® snap/YKK® zipper
- PFAS COMPLIANT

Men's Waist: 28-44, L: 30-36, 28-54 Unhemmed

Women's: 0-28 Regular, 2-28 Tall

019
Black

729
Midnight
Navy



HI-VIS POLO

RELIABLE VISIBILITY

High-visibility polo combining reflective safety features and breathable fabric for all-day wear.



112516 HI-VIS POLO

FEATURES

- Lightweight, breathable perforated fabric at side gussets
- Fade, shrink, snag and wrinkle resistant
- 3M[®] reflective striping for visibility
- Integrated collar stays to prevent curling
- Dropped front yoke with pen pocket
- Running gusset for maximum movement
- Longer body stays tucked
- PFAS COMPLIANT

XS-4XL Regular, L-4XL Tall

204
Hi-Vis
Yellow

730
Royal
Blue



MESH VENTED
UNDER ARM



HI-VIS PARKA

REFLECTIVE & PROTECTIVE

High-visibility parka with waterproof protection and reflective accents, designed for safety and comfort in low-light, hazardous environments.



ALSO IN WOMEN'S FIT

118505 MEN'S TACTIX HI-VIS SYSTEM PARKA
128505 WOMEN'S TACTIX HI-VIS SYSTEM PARKA

FEATURES

- 3-Layer fabric: outer shell, waterproof/breathable membrane, integrated lining
- Fully seam sealed
- Removable Tactix Softshell Parka included
- Rain Gutter Design™ on hood keeps water off the face
- 3-way custom adjustable hood with memory wire at opening
- Easily accessible mic loops at front yoke
- Zippered underarm gusset for movement and ventilation
- Dual access zip secure hand pockets
- Adjustable hook/loop cuff closure
- PFAS COMPLIANT

Men's: S-5XL, L-5XL Tall, Women's: XS-XXL

729
Midnight
Navy

118522 MEN'S TACTIX HI-VIS PARKA OUTER SHELL
128522 WOMEN'S TACTIX HI-VIS PARKA OUTER SHELL

- Same features as Tactix Hi-Vis System Parka minus Removable Softshell Parka
- PFAS COMPLIANT

Men's: S-5XL, L-5XL Tall, Women's: XS-XXL

729
Midnight
Navy



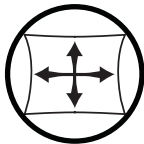
PRO DUTY™ PULLOVER

BETTER LAYERING, BETTER CONTROL

Combining lightweight breathability with targeted warmth, we made the perfect mid-layer for patrol shifts in varying temperatures. demanding duties and active use



SPLIT BACK YOKE
FOR FULL RANGE
OF MOTION



4-WAY STRETCH
FOR BETTER
MOVEMENT



DWR
DWR
FINISH

TAA
COMPLIANT

111018 PRO DUTY PULLOVER

FEATURES

- 85% Nylon/ 15% Spandex, 4-way mechanical stretch
- Insulated soft brushed stretch fleece on arms, shoulders and collar
- Fade, shrink and wrinkle resistant
- Split back yoke for full range of motion
- YKK® zip up collar
- Adjustable hook/loop cuff closures
- Duraflex® hardware
- PFAS COMPLIANT

Men's: XS-4XL

019
Black

830
OD
Green

729
Midnight
Navy

036
Wolf
Grey



3-IN-1 TACTIX SYSTEM

ALL-WEATHER READINESS

ALSO IN WOMEN'S FIT

A 3-in-1 outerwear system offering customizable layers for warmth, weather resistance, and tactical performance in any environment.



3-LAYER FABRIC
WATERPROOF
BREATHABLE

- 118502 MEN'S TACTIX SYSTEM JACKET
- 128502 WOMEN'S TACTIX SYSTEM JACKET
- 118520 MEN'S TACTIX JACKET OUTER SHELL
- 128520 WOMEN'S TACTIX JACKET OUTER SHELL
- 118500 MEN'S TACTIX SYSTEM PARKA
- 128500 WOMEN'S TACTIX SYSTEM PARKA
- 118519 MEN'S TACTIX PARKA OUTER SHELL
- 128519 WOMEN'S TACTIX PARKA OUTER SHELL



FEATURES

- 3-Layer fabric: outer shell, waterproof/breathable membrane, integrated lining
- Fully seam sealed
- Removable Tactix Softshell Parka included
- Rain Gutter Design™ on hood keeps water off the face
- 3-way custom adjustable hood with memory wire at opening
- Easily accessible mic loops at front yoke
- Zippered underarm gusset for movement and ventilation
- Dual access zip secure hand pockets
- Adjustable hook/loop cuff closure
- PFAS COMPLIANT

Men's: S-5XL Regular, L-5XL Tall
Women's: XS-XXL

019
Black

729
Midnight
Navy

830
OD
Green



OUTER SHELL



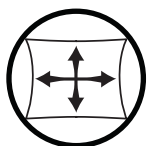
SOFTSHELL JACKET

- 119001 TACTIX SYSTEM FRONT ID PANELS
- 119000 TACTIX SYSTEM BACK ID PANELS

019
Black



ALL-WEATHER PROTECTION WITH TACTICAL PERFORMANCE



4-WAY STRETCH
FOR BETTER
MOVEMENT



SOFTSHELL JACKET & PARKA

IMPRESSIVE WARMTH & UTILITY

Tactical softshell parka offering excellent insulation, weather resistance, and full range of motion in any tactical setting.

ALSO IN WOMEN'S FIT



118501 MEN'S TACTIX SOFTSHELL PARKA
128501 WOMEN'S TACTIX SOFTSHELL PARKA

FEATURES

- 85% Nylon / 15% Spandex body
- 4-Way mechanical stretch
- Running side gussets for maximum movement
- Two zip secure chest and hand pockets
- Side zipper for firearm access
- Exterior pen pocket
- Adjustable hook/loop cuff closures
- Adjustable hem and 2-way YKK® zip closure
- Duraflex® hardware
- PFAS COMPLIANT

Men's: XS-5XL Regular, L-5XL Tall,
Women's: XS-XXL



118503 MEN'S TACTIX SOFTSHELL JACKET
128503 WOMEN'S TACTIX SOFTSHELL JACKET

Men's: XS-5XL Regular, L-5XL Tall, Women's: XS-XXL
Jacket Length: 2" shorter than Parka



118004 MEN'S TACTIX SOFTSHELL VEST

FEATURES

- Same features as Tactix Softshell Parka
- PFAS COMPLIANT

Men's: XS-4XL



TACTIX SOFTSHELL PULLOVER

WARMTH WITHOUT BULK

Professional warmth and wind resistance in a streamlined half-zip design, a great outer layer without added bulk.

ALSO IN WOMEN'S FIT



118508 MEN'S SOFTSHELL PULLOVER
128508 WOMEN'S SOFTSHELL PULLOVER

FEATURES

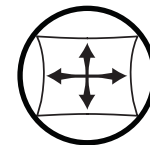
- 85% Nylon/15% Spandex with 4-way stretch
- YKK® zip up collar
- Water and wind resistant
- Easily accessible mic loops at shoulders
- Dropped front yoke with chest and pen pockets
- Double layer reinforced elbows
- Longer body
- Adjustable hook/loop cuff closures
- PFAS COMPLIANT

Men's: S-4XL Regular, L-4XL Tall
Women's: XS-XXL

019
Black

729
Midnight
Navy

830
OD
Green



4-WAY STRETCH
FOR BETTER
MOVEMENT



PACK-IT JACKET & TACTIX RAIN PANT

COMPACT, INSTANT COVERAGE

Quick, on-demand weather protection, designed to be easily stowed and deployed for when conditions turn unpredictable.



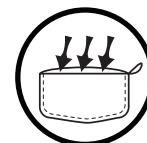
118509 PACK-IT JACKET

FEATURES

- 100% Nylon ripstop with water repellent finish
- Lightweight and packable
- YKK® full zip
- Easily accessible mic loops at front yoke
- Zip secure hand pockets
- Hook/loop secure chest pockets
- Adjustable hook/loop cuff closures
- Duraflex® hardware
- Fully customizable
- PFAS COMPLIANT

Sizes: XS-4XL

019 Black	729 Midnight Navy	830 OD Green
--------------	-------------------------	--------------------



JACKET PACKS INTO ITS OWN POCKET

114037 MEN'S TACTIX RAIN PANT

FEATURES

- 100% 3-Layer Nylon, fully seam sealed
- Lightweight and packable
- Elastic waist with adjustable drawcord
- YKK® zip secure side opening for easy tool access
- Bartacked in critical locations for longevity
- Articulated knees and running gusset for maximum movement
- YKK® zip leg opening for easy on/off
- Boot hook/loop to keep pant legs in place
- PFAS COMPLIANT

Men's: XS-4XL Short, Regular | XS-4XL Tall

019 Black	729 Midnight Navy	830 OD Green
--------------	-------------------------	--------------------



FIRST TACTICAL BELTS

COMFORTABLE & SECURE

A collection of tactical belts offering rugged durability, secure buckles, and reliable support for any mission or range day.



143020 COBRA BELT 1.5"

FEATURES



- Adjustable to fit your size
- 2 layers of heavy-duty of Nylon webbing, reinforced with PE board
- Pre-curved to fit the waist, with no break-in period
- Two-button quick release, low-profile articulated buckle
- Premium AustriAlpin solid brass buckle with stainless-steel components
- Hidden key pocket in inside tag
- Safety loop

Sizes: S-4XL

019
Black



143026 RIGGERS BELT 1.75"

FEATURES

- Heavy-duty for daily wear
- Strong load-bearing capacity for your gear
- Secure webbing lock with hook/loop closure
- V-ring provides a secure attachment point

Sizes: S-4XL

019
Black



143001 MEN'S BDU BELT 1.5"

143000 MEN'S BDU BELT 1.75"

143028 WOMEN'S BDU BELT 1.5" (BLACK ONLY)

FEATURES

- Single layer webbing
- HD polymer double bar, airport-friendly buckle

Men's: XS-4XL, Women's: XS-XXL

019
Black

830
OD
Green



143002 RANGE BELT 1.75"

143004 RANGE BELT 1.5"

FEATURES

- Double layer HD webbing
- HD polymer double bar, airport-friendly buckle

Sizes: S-4XL

019
Black

830
OD
Green

TACTICAL BELT

BETTER STRENGTH, BETTER SUPPORT

Durable tactical belt with reinforced webbing and a reliable buckle for secure, all-day support.



- 143009 MEN'S TACTICAL BELT 1.5"
- 143010 MEN'S TACTICAL BELT 1.75"
- 143032 WOMEN'S TACTICAL BELT 1.5" (BLACK ONLY)

FEATURES

- Fabricated and riveted aluminum/steel buckle
- Strength rated at 9 kN (2023 lbf) direct or 18 kN (4046 lbf) indirect force
- Double layer HD webbing

Men's: S-4XL, Women's: XS-XXL

019
Black

830
OD
Green



TACTICAL BELT



COBRA BELT



RIGGERS BELT



RANGE BELT

FIRST TACTICAL HATS

EASILY CUSTOMIZABLE

Made with the same fabrics as our apparel items, our headwear is color-matched for a seamless, professional look.



V2
FABRIC

DWR
DWR
FINISH

142062 FT FLEX HAT

FEATURES

- DWR water repellent finish
- Stretch sweatband
- PFAS COMPLIANT

Sizes: S/M, L/XL, XXL

019 Black	729 Midnight Navy	830 OD Green
--------------	-------------------------	--------------------



A2
FABRIC

DWR
DWR
FINISH

142075 A2 ADJUSTABLE HAT

FEATURES

- DWR water repellent finish
- Perfect for customized embellishing
- Traditional buckrim lined crown
- Sewn eyelets
- PFAS COMPLIANT

Sizes: L/XL

019 Black	729 Midnight Navy	830 OD Green
--------------	-------------------------	--------------------



V2
FABRIC

DWR
DWR
FINISH

142069 V2 UNIFORM HAT

FEATURES

- DWR water repellent finish
- Traditional buckrim lined crown
- Sewn eyelets
- PFAS COMPLIANT

Sizes: L/XL

019 Black	729 Midnight Navy	830 OD Green
--------------	-------------------------	--------------------



142074 FLEECE SERVICE BEANIE

FEATURES

- Double-layer lower portion for wind protection
- Warm yet light
- Fits under duty helmets
- PFAS COMPLIANT

Sizes: S/M, L/XL, XXL

019 Black	729 Midnight Navy	830 OD Green
--------------	-------------------------	--------------------

CUSTOMIZATION READY: We can provide full customization to your uniforms and hats. Contact our customer service team for more information on embroidery, heat transfers, laser engraving, custom nametapes, patches, and more.

SLASH & FLASH GLOVES

ADVANCED PROTECTION

Protective knuckle gloves with flame resistance and cut protection, delivering superior safety and tactical performance.



WATCH
CUTOUT



U-SHAPED
THUMB
GUSSET



TOUCHTAC
SENSITIVITY



PISTOL
GRIP PALM



GOATSKIN
PALM



TAA
COMPLIANT

ALSO IN WOMEN'S FIT

150012 MEN'S SLASH & FLASH GLOVES

150021 WOMEN'S SLASH & FLASH GLOVES (BLACK ONLY)

FEATURES

- Flame-resistant Nomex®
- TPU knuckle protection
- Kevlar® lined palm
- Offers protection when using sharp objects
- PFAS COMPLIANT

Sizes: Men's S-XXL, Women's S-XXL

019
Black

060
Coyote



FIRST TACTICAL GLOVES

BETTER GRIP, BETTER CONTROL

Durable gloves offering superior grip, dexterity, and protection for every mission and task.



WATCH
CUTOUT



U-SHAPED
THUMB
GUSSET



TOUCHTAC
SENSITIVITY



PISTOL
GRIP PALM



GOATSKIN
PALM



TAA
COMPLIANT

150001 MEN'S LIGHTWEIGHT PATROL GLOVE
150002 WOMEN'S LIGHTWEIGHT PATROL GLOVE
(BLACK ONLY)

FEATURES

- Snag-proof, stretch woven fabric
- For maximum speed and precision
- Perforated fourchettes for breathability
- PFAS COMPLIANT

Sizes: Men's S-XXL, Women's S-XXL

019
Black

060
Coyote



150009 MEN'S SLASH PATROL GLOVE

FEATURES

- Kevlar® lined palm offers ANSI Level II Cut Resistance
- Extreme tactility and long-term durability
- PFAS COMPLIANT

Sizes: S-XXL

019
Black



150005 MEN'S MEDIUM WEIGHT PADDED GLOVE

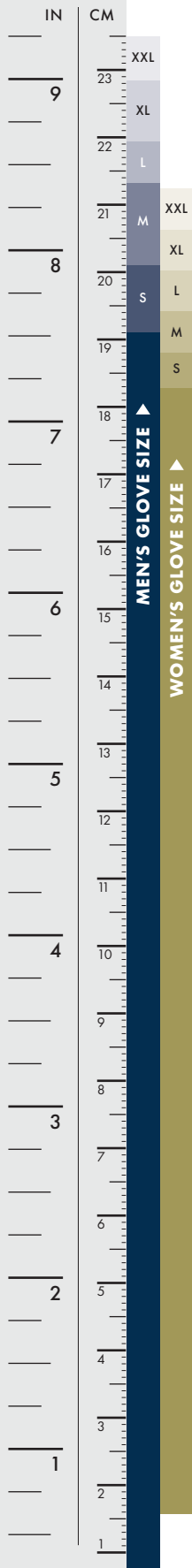
FEATURES

- Non-porous, perforated foam knuckle padding
- Neoprene finger knuckles
- Perforated fourchettes for breathability
- Control and comfort with full range of motion
- PFAS COMPLIANT

Sizes: S-XXL

019
Black





150007 MEN'S PRO KNUCKLE GLOVE

FEATURES

- Perforated fourchettes for breathability
- Corded loop at cuff for hanging
- TPU Knuckle Protection
- Bezel Cuff™ watch cutout
- Perfect for SWAT teams
- PFAS COMPLIANT

Sizes: S-XXL

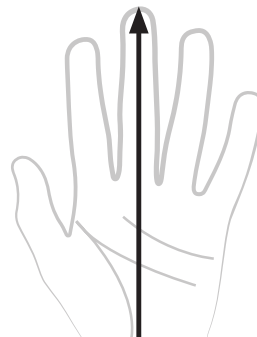
019
Black

060
Coyote
Brown



DETERMINE YOUR GLOVE SIZE:

Place your right hand, palm up behind the page and measure along the middle finger down to the natural fold at your wrist.



EMS/EMT JUMP BAG & POUCHES

DURABLE & EASY TO CLEAN

Durable EMS jump bag and pouches designed with modular storage, quick-access compartments and rugged construction to ensure you're ready for every emergency.

180029 JUMP BAG

FEATURES

- 2" deep HD TPU bottom molding
- Easy to clean webbing and bottom
- 3/4 Zip design keeps the lid clear of the ground
- Hook/loop interior
- Easily customizable for user's individual needs
- Bag stays upright with its rigid internal structure
- Gurney hooks to aid when transporting patients

Dimensions: 22" L x 12" W x 12" D / 2844 cubic inches / Approx capacity: 46.6 Liters

400
Red

204
Hi-Vis
Yellow



180047 JUMP BAG HARNESS

FEATURES

- Converts Jump Bag from shoulder bag to backpack
- Hooks and sternum strap optimize Jump Bag weight distribution
- Moisture wicking straps with EVA foam padding

015
Asphalt





(EMS supplies not included)

180040 OXYGEN KIT

FEATURES

- Buckled C-clamps with hook/loop closures allow kit placement inside or outside of the Jump Bag
- Padded bottle cover
- Top/side handle

Approx. capacity: 254 cubic inches / 4.2 liters
16.0" H x 4.5" Dia / 40.6cm H x 10.3cm Dia

800
Green



(EMS supplies not included)

180045 TRAUMA KIT

FEATURES

- Internal organization keeps supplies in one place
- Oversized zipper pulls
- Top handle

Size: 9" x 11.5" x 3"

300
Orange



(EMS supplies not included)

180042 I.V. KIT

FEATURES

- Stadium pockets offer quick, easy visibility
- Oversized zipper pulls
- Top handle

Size: 6" x 11.5" x 3"

400
Red



(EMS supplies not included)

180043 MEDICATION KIT

FEATURES

- Clear window with snap-lock ensures secure, visible meds
- Foam interior lets you customize medication layout
- Oversized zipper pulls
- Top handle

Size: 6" x 11.5" x 3"

275
Yellow



(EMS supplies not included)

180041 AIRWAY KIT

FEATURES

- Individual mesh pouches for 5 Miller & 5 Mac Blades
- Oversized zipper pulls
- Top handle

Size: 6" x 11.5" x 3"

700
Blue



180046 DOCTTAC NAME TAPES - 3 PACK

FEATURES

- Easily customize your kit and pouches with these name tapes
- Lanyard hole
- TPU material

Size: 6"x1" hook/loop name strip

015
Asphalt

SPECIALIST ROLLING DUFFLE

HEAVY DUTY, EFFICIENT STORAGE

Built to withstand long missions and rough handling, the Specialist Rolling Duffel is designed for easy transport, optimal gear access, and efficient storage when not in use.

180022 SPECIALIST ROLLING DUFFLE

FEATURES

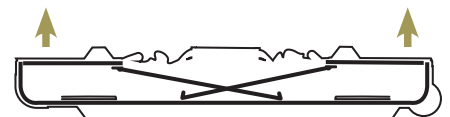
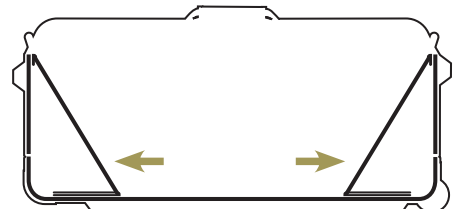
- 1000D / 1680D nylon construction, under 10 lbs - ideal for travel
- Folding frame lock system to collapse and store flat
- Thick, sturdy, telescoping handle for heavy tactical gear
- Hook/loop interior panels
- Micro mesh ID window
- Oversized, heavy-duty wheels

Main compartment: 30" x 16" x 16" D / Approx. capacity: 5514 cubic inch / 90 liter

019
Black



STAND TALL:
WHEN LOCKED, INTERNAL FRAME
STRUCTURE WILL NOT COLLAPSE



LAY FLAT:
FOLDS FLAT FOR EASY STORAGE

EXECUTIVE ROLLER AND BRIEFCASE

OFFICE-TO-FIELD-BAG

A sleek, durable briefcase with a padded laptop compartment, organized interior, and tactical durability for the modern professional on the go.



180002 EXECUTIVE BRIEFCASE

FEATURES

- Padded closed foam protective laptop compartment
- Hidden back CCW pocket
- Double zip main opening

Main compartment: 16.5" W x 10.5" H x 5.25" D / 41.9cm W x 26.7cm H x 13.3cm D
Computer compartment: 16.5" W x 10.5" H x 1.25" D / 41.9cm W x 26.7cm H x 3.2cm D
Front pockets: (x2) 8.25" W x 9" H x 1.75" D / 21.0cm W x 22.9cm H x 4.4cm D
Side pockets: (x2) 5.25" W x 9.5" H x 2" D / 13.3cm W x 24.1cm H x 5.1cm D
Approx. capacity: 1586 cubic inches / 26 liters

019
Black



INTERIOR VIEW: CCW POCKET



ZIP OUT GEAR POCKETS



SUMMIT SIDE SATCHEL

EVERY DAY COMPACT CARRY

Design for maximum efficiency, offering essential carry solutions with a rugged build for everyday use.

180012 SUMMIT SIDE SATCHEL

FEATURES

- 1000D nylon
- Padded tablet compartment
- Hidden back CCW pocket
- Non-slip shoulder

Main compartment: 12.5" L x 10" H x 4.5" D / 31.75cm L x 25.4cm H x 11.4cm D
Approx. capacity: 495 cubic inches / 8 liters

019
Black

036
Wolf
Grey

830
OD
Green

181
Coyote
Brown



CROSSHATCH SLING PACK

BETTER MOBILITY, BETTER VERSATILITY

Sling pack with a sleek design, multiple compartments, and quick-access features for everyday carry.

180011 CROSSHATCH SLING PACK

FEATURES

- 1000D nylon
- Cross-body platform
- Re-positionable or removable compression straps
- Main compartment opens to a mesh pocket
- Hook/look interior organization
- Pockets: 4 external, 3 internal
- Back CCW pocket

Main compartment: 9" L x 17.5" W x 6" D / 23cm L x 46cm H x 16cm D
Approx. capacity: 1165 cubic inches / 19.1 liters

019
Black

036
Wolf
Grey

830
OD
Green

181
Coyote
Brown



COMPRESSION STRAPS



MAIN COMPARTMENT WITH MESH POCKET



CROSS-BODY PLATFORM

RECOIL RANGE BAG

DURABLE EXCELLENCE

Spacious range bag with padded compartments, reinforced construction, and easy-access design for all your gear.

180000 RECOIL RANGE BAG

FEATURES

- Locking main compartment with hook/loop flap which opens a zipper loop
- Sliders overlap for easy locking
- Cleaning pocket with tool storage compartment with oil-resistant lining for firearms cleaning tools
- Pull-out padded carrier with dividers for easy organization:
2 pistol pockets and 10 pistol mag pockets

Main compartment: 18" L x 11" H x 9" D / 45.7cm L x 27.9cm H x 22.9cm D
Front pockets: (x2): 8.5" L x 9" H x 2" D / 21.6cm L x 22.9cm H x 5.0cm D
Side pockets: (x2): 7.5" L x 8.5" H x 3" D / 19.1cm L x 21.6cm H x 7.6cm D
Carrier compartment: 16.25" W x 7" H x 5.5" D / 41.3cm W x 17.8cm H x 14.0cm D
Approx. capacity: 2470 cubic inches / 40.5 liters
Weight: 4.4 lbs / 2.0 kg

019
Black

036
Wolf
Grey

181
Coyote
Brown



SIDE



BACK



CLEANING POCKET WITH
TOOL STORAGE

CALIBER RANGE BAG

STREAMLINED FOR EVERY SHIFT

Compact patrol bag with optimized storage, durable construction, and easy access for essential gear.

180081 CALIBER RANGE BAG

FEATURES

- 600D polyester
- Interior dividers
- Pull-out pistol/mag sleeve
- Bottom board for stability
- Reinforced foam construction
- Front gusseted pockets
- Cleaning kit pocket
- Add-a-Bag strap

Approx. capacity: 1119 cubic inches / 18.3 liters

019
Black



EDT PATROL BAG

BETTER ORGANIZATION

Perfect for patrol officers, it offers versatile carrying and streamlined organization

180080 EDT PATROL BAG

FEATURES

- 600D polyester
- Interior hook/loop organization platform
- Water bottle pockets
- Front slash pockets
- Interior mesh pockets
- Bottom board for stability
- Adjustable shoulder strap
- Reinforced carry handles

Approx. capacity: 1606 cubic inches / 26.3 liters

019
Black



LARGE PISTOL SLEEVE

SECURE FIREARM PROTECTION

Durable pistol sleeve with padded protection and locking zippers for safe, reliable transport.

180010 LARGE PISTOL SLEEVE

FEATURES

- 500D Nylon
- 10mm closed cell foam
- Includes padded slash pocket and hook/loop platform
- 5 Integrated elastic loop slots for pistol mags
- YKK® zippers and Duraflex™ hardware

Approx. Capacity 135 cubic inches / 2.2 liters

019
Black

036
Wolf
Grey

060
Coyote

830
OD
Green



GUARDIAN PATROL BAG

AMPLE SPACE FOR GEAR

Durable exterior with reinforced dividers and hard bottom for a highly functional interior

180001 GUARDIAN PATROL BAG

FEATURES

- 600D polyester
- Pockets: 6 external, 2 internal dividers
- YKK® zippers and Duraflex™ hardware

Approx. capacity: 2530 cubic inches / 41.5 liters

019
Black



FIRST TACTICAL TOOLS

EVERYDAY TOOLS

Rugged tools designed for reliability, precision, and versatility in the field.

140000 SCORPION KNIFE TANTO

FEATURES

- Easy to find index finger locator for quick knife deployment
- Lightening cuts throughout, keeping it lightweight

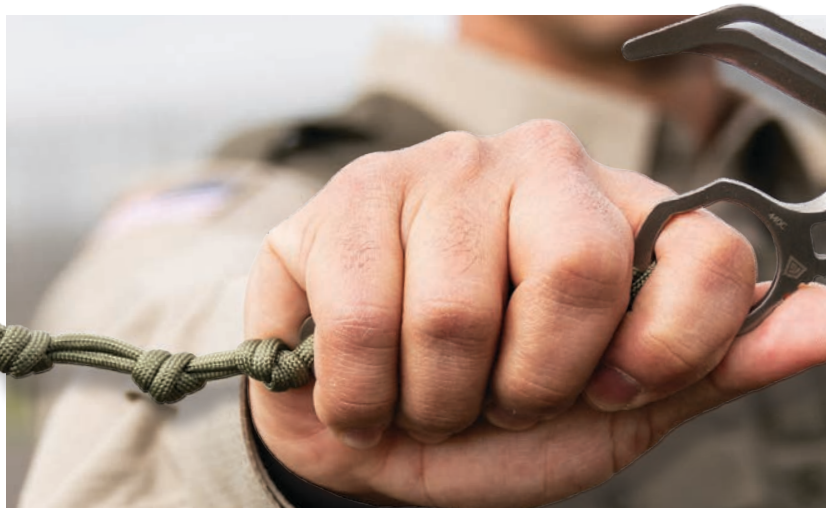
440A stainless steel
Overall length: 4.92in / 125mm
Weight: 2.6 oz

019
Black

060
Coyote



KNIFE FITS INTO SIDE POCKET OF THE 8" OPERATOR BOOT STYLES



140025 SCORPION RESCUE TOOL

FEATURES

- Thin profile
- Lightening cut blade and handle
- Secure index finger and thumb grip
- 550 Cord handle
- Triple knotted extended cord

Patent Pending Design
440A stainless steel
Length: 5.52" / 13.34cm
Width: 2.63" / 6.68cm
Thickness: 0.13" / 3.2mm



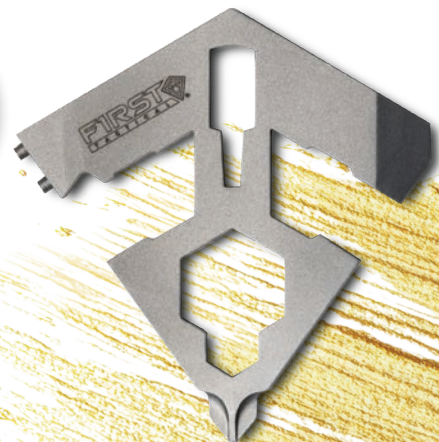
180100 SCORPION RESCUE TOOL CASE

019
Black

610
Ranger Green

019
Black

610
Ranger Green



195203 SPEAR MULTI-TOOL (SINGLE)

195203.20 SPEAR MULTI-TOOL (BOX OF 20)

FEATURES

- Bottle opener
- Aimpoint optics
- Phillips and flat head drivers
- Oxygen key
- Pry
- Key ring slot

440A steel | Length: 2.00in / 0.79cm
Width: 1.875in / 0.74cm
10.0mm/0.394" wrench
0.50"/12.7mm wrench
0.375"/9.5mm wrench
0.25"/6.4mm wrench

SPECIALIST BACKPACKS

STORAGE WITHOUT COMPROMISE

Backpacks with large compartments and easy-access design for efficient gear handling.



180006 0.5-DAY SPECIALIST BACKPACK

11" L x 18" H x 6" D/
27.9cm L x 45.7cm H x 15.2cm D
Approx. capacity: 1430 cubic inches/23 liters

180005 1-DAY SPECIALIST BACKPACK

12" L x 19" H x 8" D/
30.5cm L x 48.3cm H x 20.3cm D
Approx. capacity: 1922 cubic inches/31.5 liters

180004 3-DAY SPECIALIST BACKPACK

13" L x 22" H x 9" D/
33.0cm L x 55.9cm H x 22.9cm D
Approx. capacity: 3325 cubic inches/54.5 liters



FEATURES

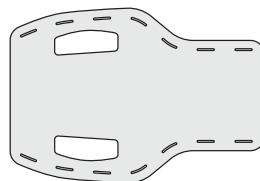
- 1000D water resistant nylon
- Structured haul handle
- Sunglass pocket
- Name tape hook/loop platform
- Organization pockets
- Bottom hook/loop pocket
- Sternum strap
- Traditional web platform
- Multi-purpose safety tool: removable backboard provides pack stability and can be used as a splint or shovel

019
Black

036
Wolf
Grey

060
Coyote

830
OD
Green



RIFLE SLEEVES

SECURE FIREARM TRANSPORT

Durable rifle sleeve with padded protection, secure straps, and convenient carry options.

180007 RIFLE SLEEVE 36" SINGLE

FEATURES

- 500D nylon
- 10mm closed cell foam padding
- Integrated rifle barrel mount offers precise fit and steadiness
- Opens 180° to serve as shooting mat
- Silent locking padded and reinforced carrying handles
- Hook and Hang Thru™ System allowing users to place rifle across their back
- Hands free, easy carry alternative
- Spacious pocket unzips top and bottom of each pack to accept Rifle Sleeves (works with Tactix and Specialist backpacks)

38" L x 10.5" H x 1.5" D
Approx. capacity: 600 cubic inches/9.8 liters
Weight: 1.65lbs/0.75kg

019
Black

060
Coyote

830
OD
Green

180008 RIFLE SLEEVE 42" SINGLE

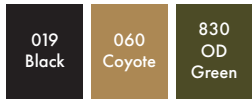
44" L x 10.5" H x 1.5" D
Approx. capacity: 695 cubic inches/11.4 liters
Weight: 1.8lbs/0.82kg



TACTIX UTILITY POUCHES

DESIGNED FOR QUICK ACCESS

Durable utility pouches with secure compartments for easy storage and quick access to essentials.



180014 **6X10 UTILITY POUCH**

6" L x 10" H x 3" D
Approx. capacity: 180 cubic in./2.9 liters



180013 **9X6 UTILITY POUCH**

9" L x 6" H x 3" D
Approx. capacity: 162 cubic in./2.7 liters



180015 **6X6 UTILITY POUCH**

6" L x 6" H x 3" D
Approx. capacity: 108 cubic in./1.8 liters



180016 **3X6 UTILITY POUCH**

3" L x 6" H x 3" D
Approx. capacity: 54 cubic in./0.9 liters



180020 **(1.0L) BOTTLE POUCH**

4.25" L x 8.5" H x 3.75" D
Approx. capacity 100 cubic in./1.6 liters / Holds 1.0L bottle



180019 **EYEWEAR POUCH**

3" L x 7" H x 2.25" D
Approx. capacity 47 cubic in./0.8 liters



180017 **MEDIA POUCH (LG)**

3" L x 6.25" H x 1" D
Approx. capacity 18.75 cubic in./0.3 liters



180018 **MEDIA POUCH (M)**

2.5" L x 5.25" H x 0.75" D
Approx. capacity 9.8 cubic in./0.16 liters



180050 **COMPRESSION STRAPS**

FEATURES

- Removable and replaceable compression straps
- Compatible with all Tactix and Specialist packs



INTERNAL ORGANIZER POUCHES

EASY VIEWING, BETTER STORAGE

Durable, compact pouches with clear micro mesh face for easy viewing and quick access.

FEATURES

- Clear face with micro mesh for visibility
- Barcoded items can be scanned without removal
- Light interior makes gear easy to find
- Quick-pull zippers allow one-handed pouch access in emergencies
- Backed with hook/loop for customizable positioning



180030 9X10 HOOK & LOOP POUCH



180033 6X10 HOOK & LOOP POUCH



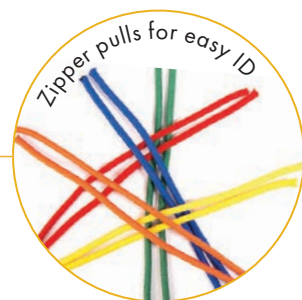
180034 9X6 HOOK & LOOP POUCH



180032 6X6 HOOK & LOOP POUCH



180031 6X3 HOOK & LOOP POUCH



INNOVATIVE EFFICIENT STURDY BACKPACKS



- | | | |
|--------------|---------------|--------------------|
| 019
Black | 060
Coyote | 830
OD
Green |
|--------------|---------------|--------------------|

TACTIX BACKPACKS

BUILT FOR TACTICAL EFFICIENCY

These sturdy packs feature innovative Lynx™ Laser Cut Platform, compatible with MOLLE/PALS



180036 0.5-DAY TACTIX BACKPACK

11" L x 18" H x 6" D
27.9cm L x 45.7cm H x 15.2cm D
1739 cubic inches/28.5 liters

180021 1-DAY TACTIX BACKPACK

12" L x 19" H x 8" D
30.5cm L x 48.3cm H x 20.3cm D
2151 cubic inches/35.25 liters

180035 3-DAY TACTIX BACKPACK

13" L x 22" H x 9" D
33.0cm L x 55.9cm H x 22.9cm D
3936 cubic inches/64.5 liters

FEATURES

- 500D/1000D double layer, water resistant nylon
- Lynx™ Laser Cut Platform
- Dual density foam comfort
- Hook and Hang Thru™ System unzips top and bottom, for gear, like First Tactical Rifle Sleeves, to slide through and securely hook & hang in place
- Side haul handle and adjustable yoke handle
- CCW pocket and front quick-access pockets
- Organization pocket and bottom zip pocket
- Hammock style fleece lined sunglass pocket
- Re-positionable compression straps
- Sliding sternum strap
- Multi-purpose safety tool: removable backboard provides pack stability and can be used as a splint or shovel



180048 TACTIX WAIST BELT

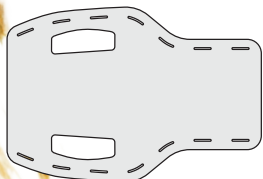
FEATURES

- Patented Lynx™ Laser Cut Platform
- Closed cell foam construction
- Durable and comfortable

019
Black

060
Coyote

830
OD
Green



LET US HELP DETERMINE YOUR SIZE

Using a measuring tape, measure your body (over undergarments), referring to charts below to determine the best size. If you fall between sizes, we recommend ordering the larger size.

NEED HELP DETERMINING YOUR SIZE? CONTACT US!

CALL: 855.665.3410 OR EMAIL: support@firsttactical.com

WOMEN'S APPAREL/BELT MEASUREMENTS

Alpha US/UK DE/EU	Alpha MX	Numeric US/MX/Bottoms	UK Bottoms	DE/EUR Bottoms	Natural Waist	Hip	Chest	Arm Length
XS	X-Chica/XCH	0	4	30	25½	35	32 - 33	29½ - 29¾
		2	6	32	26½	36		
Small	Chica/CH	4	8	34	27½	37	34 - 35	30¼ - 30½
		6	10	36	28½	38		
Medium	Mediano/M	8	12	38	29½	39	36 - 37	31 - 31¼
		10	14	40	30½	40		
Large	Grande/G	12	16	42	32	41½	38½ - 40	31¾ - 32
		14	18	44	33½	43		
XL	XG	16	20	46	35¾	45	42 - 44	32½ - 32¾
		18	22	48	38	47		
XXL	XXG	20	24	50	40¼	49	46 - 48	33¼ - 33½
		22	26	52	42½	51		
3XL	3XG	24	28	54	44¾	53	50 - 52	34 - 34¼
		26	30	56	47	55		
4XL	4XG	28	32	58	49¼	57	54	34¾

HOW TO MEASURE:

NECK: Measure the largest portion of the neck circumference.

CHEST: Measure under arms and around the fullest part of your chest with measuring tape parallel to the floor

MEN'S WAIST: Take measurement around your waistline, where your belt typically sits.

WOMEN'S NATURAL WAIST: Measure around the smallest part of your waist (where it bends).

WOMEN'S HIP: Stand with your feet together & measure around the fullest part of your hip with the measuring tape parallel to the floor.

ARM LENGTH: Slightly bend elbow & measure from center back neck, over top of shoulder & down to wrist

INSEAM: Measure the inseam of pants that fit you well. Place them in a flat position, ensuring both front and back are neatly pressed. Measure from the crotch to the leg hem along the inseam.

MEN'S TALL SIZES: have 2" added to body length and 2" added to sleeve length (1" for short sleeves). Short sizes have 2" removed from body length and 2" removed from sleeve length (1" for short sleeves).

WOMEN'S TALL SIZES: have 2" added to body length and 1½" added to sleeve length (¾" for short sleeves).

MEN'S APPAREL/BELT MEASUREMENTS

Alpha US/UK DE/EU	Alpha MX	Numeric US/MX/UK Bottoms	Numeric DE/EUR Bottoms	Waist	Neck	Chest	Arm Length
XS	X-Chica/XCH	24	40	24	13 - 13½	30 - 32	32¼ - 32¾
		26	42	26			
Small	Chica/CH	28	44	28	14 - 14½	34 - 36	33 - 33½
		30	46	30			
Medium	Mediano/M	32	48	32	15 - 15½	38 - 40	33¾ - 34¼
		34	50	34			
Large	Grande/G	36	52	36	16 - 16½	42 - 44	34½ - 35
		38	54	38			
XL	XG	40	56	40	17 - 17½	46 - 48	35¼ - 35¾
		42	58	42			
XXL	XXG	44	60	44	18 - 18½	50 - 52	36 - 36½
		46	62	46			
3XL	3XG	48	64	48	19 - 19½	54 - 56	36¾ - 37¼
		50	66	50			
4XL	4XG	52	68	52	20 - 20½	58 - 60	37½ - 38
		54	70	54			
5XL	5XG	56	72	56	21 - 21½	62 - 64	38¼ - 38¾
		58	74	58			
6XL	6XG	60	76	60	22 - 22½	66 - 68	39 - 39½
		62	78	62			
7XL	7XG	64	80	64	23 - 23½	70 - 72	39¾ - 40¼
		66	82	66			
8XL	8XG	68	84	68	24 - 24½	74 - 76	40½ - 41
		70	86	70			

NOTE: Measurements are given in inches and correspond to body measurements.

FULL RANGE OF CUSTOM SERVICES

CUSTOM SHOP

**ALTERATIONS
EMBROIDERY
SCREEN PRINTING
HEAT TRANSFER**

**LASER ENGRAVING
DIGITIZING
FT FLEX™
CUSTOM DESIGNS**



Our Custom Shop services include custom logos and alterations for individual or department needs.

We also offer FT FLEX™ soft-badges, exclusive to First Tactical gear.

FOOTWEAR SIZING

Width		Men's US	Women's US	UK	EUR
	Reg	4	5 ½	3 ½	37
	Reg	4 ½	6	4	37 ½
	Reg	5	6 ½	4 ½	38
	Reg	5 ½	7	5	38 ½
	Reg	6	7 ½	5 ½	39
	Reg	6 ½	8	6	39 ½
	Reg	7	8 ½	6 ½	40
	Reg	7 ½	9	7	40 ½
Wide	Reg	8	9 ½	7 ½	41
Wide	Reg	8 ½	10	8	41 ½
Wide	Reg	9	10 ½	8 ½	42
Wide	Reg	9 ½	11	9	42 ½
Wide	Reg	10	11 ½	9 ½	43
Wide	Reg	10 ½	12	10	43 ½
Wide	Reg	11	12 ½	10 ½	44
Wide	Reg	11 ½	13	11	44 ½
Wide	Reg	12	13 ½	11 ½	45
Wide	Reg	13	14 ½	12 ½	46
Wide	Reg	14	15 ½	13 ½	47
Wide	Reg	15	16 ½	14 ½	48

OPERATOR BOOTS

LIGHTWEIGHT & BREATHABLE

These boots combine exceptional durability with the flexibility and comfort of athletic footwear

165010 MEN'S 7" OPERATOR BOOT

FEATURES

- Air mesh upper with Ortholite® foam insole
- Welded construction
- Achilles flex point for freedom of movement
- Durable rubber outsole
- Oil and slip resistant
- TPU heel clip for additional support
- Lace garage keeps laces tucked out of the way

Sizes: Regular 4-12, 13, 14, 15
Wide 8-12, 13, 14, 15

019
Black

060
Coyote



ENHANCED AIRFLOW



TPU HEEL CLIP

165920 MEN'S 3" OPERATOR LOW

Sizes: Regular 4-12, 13, 14, 15
Wide 8-12, 13, 14, 15

019
Black

060
Coyote



LACE GARAGE



URBAN OPERATOR SIDE ZIP BOOTS

ATHLETIC SHOE COMFORT

The Torsion Flex™ fiberglass reinforced composite shank is 75% lighter than steel

165014 MEN'S 7" URBAN OPERATOR SIDE-ZIP BOOT

FEATURES

- Durable YKK® VISLON® zipper and molded zipper covers
- Lightweight Torsion Flex™ fiberglass shank
- Lateral stabilizers outsole creates integrated support
- Lightweight 3D spacer air mesh and strategically placed perforations for ventilation
- Performance insoles for breathability and shock absorption
- Angled lugs easily remove debris
- Full grain polishable leather toe cap
- Achilles flex point for freedom of movement
- Durable rubber outsole
- Oil and slip resistant
- Lace garage keeps laces tucked out of the way

Sizes: Regular 4-12, 13, 14, 15 / Wide 8-12, 13, 14, 15

019
Black



MOLDED ZIPPER COVER



PERFORMANCE INSOLES



ACHILLES FLEX POINT

165015 MEN'S 7" URBAN OPERATOR H2O SIDE-ZIP BOOT

FEATURES

- 100% waterproof and breathable membrane

Sizes: Regular 4-12, 13, 14, 15 | Wide 8-12, 13, 14, 15

019
Black



165921 MEN'S 3" URBAN OPERATOR LOW

Sizes: Regular 4-12, 13, 14, 15 | Wide 8-12, 13, 14, 15

019
Black



WOMEN'S SIZES:
SEE CONVERSION CHART
ON PAGE 69



165063 MEN'S 5" URBAN H2O OPERATOR MID

FEATURES

- 100% waterproof membrane construction
- Fiberglass shank for torsional rigidity and arch support
- BK Mesh ensures breathability and moisture-wicking
- Full grain polishable leather toe cap
- Slip and oil resistant

Sizes: Regular 4-15, Half Size 6.5-11.5
Wide 8-15, Half Size 8.5 - 11.5

019
Black



165911 MEN'S 5" URBAN OPERATOR SIDE-ZIP MID

FEATURES

- Fiberglass shank for torsional rigidity and arch support
- Polyester air mesh lining for ventilation
- Durable YKK® VISLON® zipper and molded zipper covers
- Full grain polishable leather toe cap
- Slip and oil resistant

Sizes: Regular 4-15, Half Size 6.5-11.5
Wide 8-15, Half Size 8.5 - 11.5

019
Black



165061 MEN'S 5" OPERATOR MID

FEATURES

- Running shoe platform
- Fiberglass shank for torsional rigidity and arch support
- BK Mesh ensures breathability and moisture-wicking
- Polyester air mesh lining for ventilation
- Rubber toe guard

Sizes: Regular 4-15, Half Size 6.5-11.5
Wide 8-15, Half Size 8.5 - 11.5

019
Black

060
Coyote



165062 MEN'S 5" URBAN OPERATOR MID

FEATURES

- Fiberglass shank for torsional rigidity and arch support
- BK Mesh ensures breathability and moisture-wicking
- Polyester air mesh lining for ventilation
- Full grain polishable leather toe cap
- Slip and oil resistant

Sizes: Regular 4-15, Half Size 6.5-11.5
Wide 8-15, Half Size 8.5 - 11.5

019
Black



165912 MEN'S 5" URBAN OPERATOR H2O SIDE-ZIP MID

FEATURES

- 100% waterproof membrane construction
- Fiberglass shank for torsional rigidity and arch support
- BK Mesh ensures breathability and moisture-wicking
- Durable YKK® VISLON® zipper and molded zipper covers
- Full grain polishable leather toe cap
- Slip and oil resistant

Sizes: Regular 4-15, Half Size 6.5-11.5
Wide 8-15, Half Size 8.5 - 11.5

019
Black

FIRST TACTICAL DUTY SOCKS

MOISTURE WICKING

Our socks are super comfortable due to their cushioned soles, for all-day wear



- 160008 ADVANCED FIT DUTY 9" SOCKS
- 160013 ADVANCED FIT DUTY 6" SOCKS
- 160014 ADVANCED FIT DUTY LOW CUT SOCKS

- 160001 COTTON 6" DUTY 3-PACK SOCKS
- 160002 COTTON 9" DUTY 3-PACK SOCKS

FEATURES

- Cotton Polymer Fiber and anti-moisture yarns
- Seamless toe
- Cushioned padding stands up to long shifts
- Performance fit compression
- Vented panels under toes

019
Black

One Size

FEATURES

- Made with natural fiber
- Moisture-wicking and quick-dry
- Additional cushioned soles

Sizes: S/M, L/XL

019
Black



INTRODUCING AERO-TAC

EXTREMELY DURABLE, COMFORTABLE, STABLE & LIGHTWEIGHT

(Women's sizes: See conversion chart on page 69)

Exceeding Standard Requirements for comfort, durability, stability and traction

Hyperfusion Technology: TPU is fused to the mesh upper, improving durability and reducing delamination risks

REZ-TRAC™ Tread Pattern with strategically placed treads for extreme stability and traction in all directions



019
Black



019
Black



019
Black

165925 MEN'S 8" AERO-TAC SZ BOOT

FEATURES

- YKK® side zip, zip garage, lace garage, stay flat pull tab

Sizes: Regular 6-12, Half Size 6.5-11.5

165928 MEN'S AERO-TAC SZ MID

FEATURES

- YKK® side zip, zip garage, lace garage, stay flat pull tab

Sizes: Regular 6-12, Half Size 6.5-11.5

165930 MEN'S AERO-TAC SZ LOW

FEATURES

Sizes: Regular 6-12, Half Size 6.5-11.5



WATERPROOF



165927 MEN'S 8" AERO-TAC WP SZ BOOT

FEATURES

- Waterproof protected by a HydroGuard® bootie membrane
- YKK® side zip, zip garage, lace garage, stay flat pull tab

Sizes: Regular 6-12, Half Size 6.5-11.5

019
Black



165929 MEN'S AERO-TAC WP SZ MID

FEATURES

- Waterproof protected by a HydroGuard® bootie membrane
- YKK® side zip, zip garage, lace garage, stay flat pull tab

Sizes: Regular 6-12, Half Size 6.5-11.5

019
Black



165926 MEN'S 8" AERO-TAC SFTY SZ BOOT

FEATURES

- Nylon and fiberglass safety toe is stronger and lighter than the standard composite toe boots
- YKK® side zip, zip garage, lace garage, stay flat pull tab

Sizes: Regular 6-12, Half Size 6.5-11.5
Wide 8-12, Half Size 8.5 - 11.5

019
Black



165931 MEN'S AERO-TAC SFTY SZ MID

FEATURES

- Nylon and fiberglass safety toe is stronger and lighter than the standard composite toe boots
- YKK® side zip, zip garage, lace garage, stay flat pull tab

Sizes: Regular 6-12, Half Size 6.5-11.5
Wide 8-12, Half Size 8.5 - 11.5

019
Black

SAFETY TOE



INTRODUCING

AERO-TAC

THIS BOOT IS LIGHT AS *#!!

BETTER COMFORT BETTER TRACTION



EXTREMELY LIGHTWEIGHT



EXTREMELY DURABLE



FREE OF METALS

Airport friendly and suitable for secure facility environments



ANTIMICROBIAL LINING

AEGIS® antimicrobial lining protects against bacteria and odor



ORTHOLITE® COMFORT INSOLES

Premier brand known for providing long lasting cushioning and comfort



MOLDED TPU TOE CAP

Enhances durability and protects against abrasion



EXTREMELY SLIP RESISTANT

Exceeds EU and ASTM slip resistant standards

