

Scan to view online.



2024 GROUP CATALOG



2245 JULIET Women's
Healing Hands Yoga Knit
V-Neck Top in Teal



FIND THE BEST FIT FOR YOUR GROUP.

In this guide, you'll find all of our reorderable collections to help you choose the best uniforms for your team.

Whatever you choose, you can count on consistency of color, fit, and quality; 100% social-compliance adherence; strong global sourcing and manufacturing infrastructure; extensive inventory housed in a combined 500,000 square foot of space; and world-class service from multiple distribution centers across the country.

From durable, comfortable classics to premium fashion-inspired collections, Careismatic has everything you need to make an excellent group decision.



CONTENTS

06 GOOD/BETTER/BEST GUIDE

08 GOOD

- 08 Cherokee Workwear Originals
- 12 Cherokee Workwear Professionals
- 16 Dickies Medical EDS Signature
- 20 Dickies Medical EDS Essentials
- 24 HH Works by Healing Hands

28 BETTER

- 28 Cherokee Workwear Revolution
- 34 Cherokee Workwear Core Stretch
- 36 iflex by Cherokee
- 38 Dickies Medical Balance
- 42 Healing Hands Purple Label
- 46 Med Couture Insight
- 48 RothWear Insight

50 BEST

- 50 Dickies Medical Dynamix
- 54 Infinity by Cherokee
- 60 Form by Cherokee
- 62 Healing Hands Purple Label Camo
- 64 Med Couture Touch
- 66 RothWear Touch

68 LAB COATS

- 68 Genuine Dickies / Project Lab by Cherokee / Dickies Medical
- 71 Healing Hands / Project Lab by Cherokee
- 72 Project Lab by Cherokee

73 GUIDES AND CHARTS

7777 Men's RothWear Jogger Pant in Slate (SLAT)

2432 Women's Med Couture Insight One-pocket Top in Lilac (LILA)

2711 Women's Med Couture Insight Jogger Pant in Lilac (LILA)



GOOD



Professional, comfortable classics from brands they know and trust.

Great style and fit, now with more choices than ever. These Cherokee, Dickies, and Healing Hands collections give your team the name brands they want with the quality you've come to expect in Women's, Men's, and Unisex styles in sizes XXS to 5XL.

FEATURED COLLECTIONS



BETTER



Fashion and function in collections that bring your team to the next level.

Our Better tier is better than ever, with more choices and a bigger range of brands. In addition to trusted faves from Allura, Cherokee, Dickies, and Healing Hands, we now offer women's apparel from Med Couture and their brother brand RothWear for men.

FEATURED COLLECTIONS



BEST



Ultra-premium uniforms for style and performance without compromise.

The best of the best for teams that insist on nothing but. In these collections, you'll find features like sustainable performance fabrics, Certainty® antimicrobial and fluid-barrier fabric technologies, premium design elements, and an elevated range of style choices.

FEATURED COLLECTIONS



GOOD



COMFORT, STRENGTH, STYLE.

The collection that made Cherokee famous, with the quality healthcare pros know and trust.



DURABLE



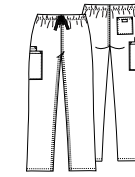
EASY CARE

65 POLY/35 COTTON POPLIN
(WHITE: 55 COTTON/45 POLY POPLIN)

Offers Women's, Men's, and Unisex fits in sizes XXS to 5XL, with Petite/Short and Tall options.

WW645 Women's V-Neck Top in Navy (NAVW)

COLOR AND STYLE MATRIX



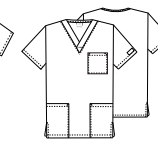
4100/S/T
Drawstring
Cargo Pant

XXS-5XL (31")
[S] XXS-3XL
(28½")
[T] S-2XL (34")



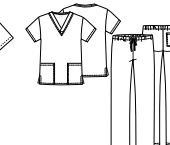
4777
V-Neck
Tunic

XXS-5XL
(27½")



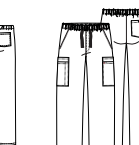
4876
V-Neck
Top

XXS-5XL
(29")



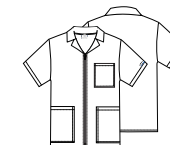
WW530C
Top and
Pant Set

XXS-5XL
(CBL: 28½"
Inseam: 31")



4000/S/T
Fly Front
Cargo Pant

S-5XL (31")
[S] S-3XL (28½")
[T] S-2XL
(36" unhemmed)



4300
Zip Front
Jacket

S-5XL
(30½")

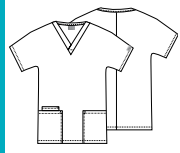


4789
V-Neck
Top

S-5XL
(29")

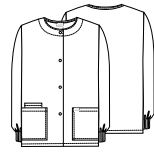
	UNISEX STYLES				MEN'S STYLES		
Black (BLKW)					No Tall		
Navy (NAVW)					No Tall		
Pewter (PWTW)					No Tall		
Royal (ROYW)					No Tall		
Ciel (CIEW)					No Tall		
Wine (WINW)					No Tall		N/A
Caribbean Blue (CARW)					No Tall	N/A	N/A
Hunter Green (HUNW)					No Tall		N/A
White (WHTW)					No Short or Tall		N/A
Galaxy Blue (GABW)					No Short or Tall	N/A	N/A
Grey (GRYW)				N/A	No Short		N/A
Olive (OLVW)				N/A	No Short or Tall	N/A	N/A
Teal Blue (TLBW)				N/A	No Short or Tall	N/A	N/A
Red (REDW)					No Short or Tall	N/A	N/A
Khaki (KAKW)				N/A	No Short or Tall		N/A
Grape (GRPW)				N/A	No Short or Tall	N/A	N/A
Surgical Green (SGRW)	No Short or Tall		N/A	N/A	N/A	N/A	N/A
Eggplant (EGGW)			N/A	N/A	No Short or Tall	N/A	N/A
Turquoise (TRQW)			N/A	N/A	N/A	N/A	N/A
Chocolate (CHCW)	No Short or Tall		N/A	N/A	N/A	N/A	N/A
Shocking Pink (SHPW)			N/A	N/A	N/A	N/A	N/A

COLOR AND STYLE MATRIX



4700
V-Neck
Top

XXS-5XL
(26½")



4350
Snap Front
Warm-up
Jacket

XXS-5XL
(27½")



WW645
V-Neck
Top

XXS-5XL
(27")



4881
Long Sleeve
Underscrub
Knit Tee

XS-2XL
(26")



WW650
Mock Wrap
Top

XXS-5XL
(26")



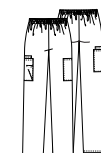
4770
Snap Front
V-Neck Top

XXS-5XL
(26½")



4801
Mock Wrap
Tunic

XXS-5XL
(28½")



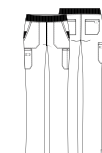
4200/P/T
Natural Rise
Pull-on
Cargo Pant

XS-5XL (30")
[P] XS-3XL (27½")
[T] XS-2XL (33")



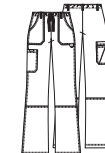
4101/P/T
Natural Rise
Drawstring
Pant

XXS-3XL (31")
[P] XXS-2XL (28½")
[T] XXS-3XL (34")



WW210/P/T
Mid Rise
Pull-on
Cargo Pant

XXS-5XL (31")
[P] XXS-2XL (28½")
[T] XS-2XL (34")



4020/P/T
Drawstring
Cargo Pant

XXS-3XL (31")
[P] XXS-XL (28½")
[T] XS-XL (34")

WOMEN'S TOPS

Color	4700	4350	WW645	4881	WW650	4770
Black (BLKW)				[Rayon/Spandex Knit]		
Navy (NAVW)				[Rayon/Spandex Knit]		
Pewter (PWTW)				[Rayon/Spandex Knit]		
Royal (ROYW)				[Rayon/Spandex Knit]		
Wine (WINW)				[Rayon/Spandex Knit]		
White (WHTW)				[Rayon/Spandex Knit]		
Ciel (CIEW)				N/A		
Caribbean Blue (CARW)				[Rayon/Spandex Knit]		
Hunter Green (HUNW)				N/A		
Red (REDW)				[Rayon/Spandex Knit]		
Teal Blue (TLBW)				N/A		
Galaxy Blue (GABW)				N/A		
Khaki (KAKW)			N/A	N/A	N/A	
Grey (GRYW)			N/A	N/A	N/A	
Shocking Pink (SHPW)			N/A	[Rayon/Spandex Knit]	N/A	
Turquoise (TRQW)			N/A	[Rayon/Spandex Knit]	N/A	
Grape (GRPW)			N/A	N/A	N/A	
Eggplant (EGGW)			N/A	N/A	N/A	
Olive (OLVW)			N/A	N/A	N/A	
Orchid (ORCW)		N/A	N/A	N/A	N/A	N/A
Surgical Green (SGRW)		N/A	N/A	N/A	N/A	N/A
Chocolate (CHCW)		N/A	N/A	N/A	N/A	N/A

WOMEN'S TOPS

WOMEN'S PANTS

Color	4801	4200/P/T	4101/P/T	WW210/P/T	4020/P/T
Black (BLKW)					
Navy (NAVW)					
Pewter (PWTW)					
Royal (ROYW)					
Wine (WINW)	N/A				
White (WHTW)	N/A			N/A	N/A
Ciel (CIEW)					
Caribbean Blue (CARW)	N/A				N/A
Hunter Green (HUNW)				N/A	N/A
Red (REDW)	N/A			N/A	N/A
Teal Blue (TLBW)	N/A			N/A	N/A
Galaxy Blue (GABW)	N/A			N/A	N/A
Khaki (KAKW)	N/A			N/A	N/A
Grey (GRYW)	N/A	No Tall		N/A	N/A
Shocking Pink (SHPW)	N/A			N/A	N/A
Turquoise (TRQW)	N/A			N/A	N/A
Grape (GRPW)	N/A			N/A	N/A
Eggplant (EGGW)	N/A			N/A	N/A
Olive (OLVW)	N/A	No Tall	Tall XS-2XL	N/A	N/A
Orchid (ORCW)	N/A		Tall XS-2XL	N/A	N/A
Surgical Green (SGRW)	N/A	No Short or Tall	N/A	N/A	N/A
Chocolate (CHCW)	N/A	No Short or Tall	N/A	N/A	N/A

GOOD



SMART LOOKS, SMART PRICE.

Polished, professional styles
in fabric with added stretch.



DURABLE



TWO-WAY STRETCH



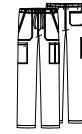
EASY CARE

**63 POLY/34 COTTON/
3 SPANDEX POPLIN**

*Offers Women's, Men's, and
Unisex fits, sizes XXS to 5XL,
with Petite/Short and Tall
pant options, plus a dress
and skirt.*

**WW675 Men's V-Neck Top in
Black (BLK)**

COLOR AND STYLE MATRIX



WW190/S/T
Fly Front Cargo Pant

XS-5XL (32")
[S] XS-3XL (29½")
[T] S-2XL (35")



WW695/T
V-Neck Top

XS-5XL (29")
[T] XS-5XL (32")



WW675
V-Neck Top

XS-5XL (28")



WW360
Snap Front Jacket

XS-5XL (30")



WW700
Underscrub Knit Top

XS-2XL (29")

MEN'S STYLES

Black (BLK)					[Rayon/Spandex Knit]
Navy (NAV)					[Rayon/Spandex Knit]
Pewter (PWT)					[Rayon/Spandex Knit]
Ciel (CIE)					N/A
Royal (ROY)					N/A
Caribbean Blue (CAR)					N/A
Hunter Green (HUN)					N/A
White (WHT)					[Rayon/Spandex Knit]
Wine (WIN)					N/A
Galaxy Blue (GAB)		No Tall			N/A
Olive (OLV)		No Tall			N/A
Grey (GRY)		No Tall			N/A
Red (RED)					N/A
Teal Blue (TLB)		No Tall	N/A	N/A	N/A

COLOR AND STYLE MATRIX



WW665
V-Neck Top

XXS-5XL
(26")



WW340
Snap Front Jacket

XXS-5XL
(28½")



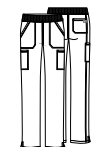
WW655
Mock Wrap Top

XXS-5XL
(27")



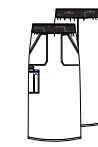
WW160/P/T
Mid Rise Drawstring Pant

XXS-5XL (31")
[P] XXS-2XL (28½")
[T] XS-2XL (34")



WW170/P/T
Mid Rise Pull-on Cargo Pant

XXS-5XL (31")
[P] XXS-2XL (28½")
[T] XS-2XL (34")



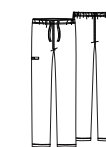
WW510
30" Knit Waistband Skirt

XS-5XL
(30")



WW500
Button Front Dress

XS-5XL
(41½")



WW125
Pocketless Drawstring Pant

XXS-5XL
(31")



WW605
Pocketless V-Neck Top

XXS-5XL
(27½")



WW361
Unisex 40" Pocketless Snap Front Lab Coat

XXS-5XL
(40")

WOMEN'S TOPS

WOMEN'S PANTS

Black (BLK)				
Navy (NAV)				
Pewter (PWT)				
Royal (ROY)				
White (WHT)				
Ciel (CIE)				
Caribbean Blue (CAR)				
Wine (WIN)				
Olive (OLV)			No Petite, No Tall	
Red (RED)				
Hunter Green (HUN)				
Grey (GRY)			No Petite, No Tall	
Galaxy Blue (GAB)			No Petite, No Tall	
Teal Blue (TLB)		N/A	N/A	N/A
Electric Pink (EPI)		N/A	N/A	N/A

WOMEN'S STYLES

UNISEX STYLES

	N/A			N/A
N/A	N/A			N/A
	N/A	N/A	N/A	N/A
		N/A	N/A	
N/A	N/A	N/A	N/A	N/A
N/A	N/A			N/A
N/A	N/A	N/A	N/A	N/A
N/A	N/A	N/A	N/A	N/A
N/A	N/A			N/A
N/A	N/A	N/A	N/A	N/A
N/A	N/A	N/A	N/A	N/A

GOOD



STYLE THAT HOLDS UP.

Soft and super durable in an innovative cotton/poly blend designed to stand up to challenging situations.



SIGNATURE STYLING



STRONG & DURABLE



EASY CARE

BRUSHED 55 COTTON/45 POLY
POPLIN




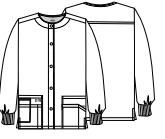
Offers Women's, Men's, and Unisex fits, sizes XXS to 5XL, with Petite/Short and Tall options.

86706 Women's V-Neck Top in Red (REWZ)

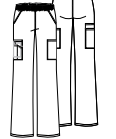
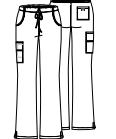

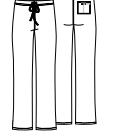
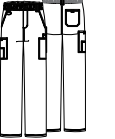

81906 Men's V-Neck Top in Hunter Green (HUWZ)



COLOR AND STYLE MATRIX

			
86706 V-Neck Top	85906 V-Neck Top	86806 Mock Wrap Top	86306 Snap Front Warm-up Jacket
XXS-5XL (27") Modern Classic Fit	XXS-3XL (26") Contemporary Fit	XXS-3XL (25") Modern Classic Fit	XS-5XL (28½") Modern Classic Fit

	WOMEN'S STYLES			
Black (BLWZ)				
Navy (NVWZ)				
Pewter (PWTW)				
Royal (ROWZ)				
Galaxy Blue (GBWZ)				
Dark Khaki (KHIZ)				N/A
Ciel (CIWZ)				N/A
Caribbean Blue (CAWZ)				N/A
Wine (WIWZ)				N/A
White (WHWZ)				
Olive (OLWZ)		N/A	N/A	N/A
Hunter Green (HUWZ)			N/A	N/A
Grey (GRWZ)			N/A	N/A
Teal Blue (TLWZ)				N/A
Eggplant (EGWZ)			N/A	N/A
Red (REWZ)			N/A	N/A
Hot Pink (HPKZ)			N/A	N/A

					
86106/P/T Natural Rise Pull-on Cargo Pant	86206/P/T Mid Rise Drawstring Cargo Pant	83706 V-Neck Top	83006/S/T Natural Rise Drawstring Pant	81006/T Natural Rise Zip Fly Pull-on Pant	81906 V-Neck Top
XXS-5XL (30½") [P] XXS-2XL (28") [T] XS-2XL (33½") Modern Classic Fit	XXS-5XL (30½") [P] XXS-2XL (28") [T] XS-2XL (33½") Modern Classic Fit	XS-5XL (28")	XS-5XL (31") [S] XS-2XL (28½") [T] XS-2XL (34")	S-5XL (31½") [T] S-3XL (34½")	S-5XL (29")

WOMEN'S PANTS		UNISEX		MEN'S STYLES	
No Tall				N/A	N/A
			No Short or Tall		
No Tall	N/A		No Short or Tall		
No Tall	N/A		No Short or Tall		
No Tall	N/A		No Short or Tall		
No Tall				N/A	N/A
No Tall	N/A		No Short or Tall	N/A	N/A
No Tall	N/A		No Short or Tall	N/A	N/A
No Tall	N/A	N/A	N/A	N/A	N/A

GOOD



ESSENTIALLY VERSATILE.

In Men's, Women's, and Unisex styles, this collection is designed for durability and comfort all shift long.



FOUR-WAY STRETCH



STRONG & DURABLE



EASY CARE

95 POLY/5 SPANDEX POPLIN

Offers Women's, Men's, and Unisex fits, sizes XXS to 6XL, with Petite/Short and Tall options.

DK615 Women's V-Neck Top in Wine (WNPS)



DK619 Unisex V-Neck Top in Hunter Green (HNPS) and **DK019** Unisex Natural Rise Drawstring Pant in Hunter Green (HNPS)

COLOR AND STYLE MATRIX



DK615
V-Neck Top

XXS-5XL
(26")



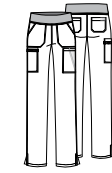
DK305
Snap Front
Warm-up Jacket

XXS-5XL
(27")



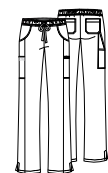
DK625
Mock Wrap Top

XXS-5XL
(26")



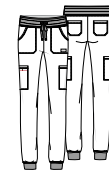
DK005/P/T
Natural Rise
Pull-on Cargo
Pant

XXS-5XL (30")
[P] XXS-3XL (27½")
[T] XS-2XL (33")



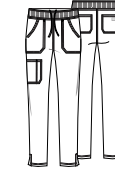
DK010/P/T
Mid Rise
Drawstring Pant

XXS-5XL (30½")
[P] XXS-3XL (28")
[T] XS-2XL (33½")



DK065/P/T
Mid Rise Jogger
Pant

XXS-5XL (29")
[P] XXS-3XL (26½")
[T] XS-2XL (32")



DK090/P/T
Mid Rise Pull-on
Pant

XXS-5XL (30")
[S] XXS-3XL (27½")
[T] XS-2XL (33")



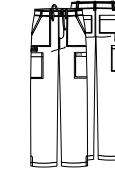
DK635
V-Neck
Top

XS-5XL
(28")



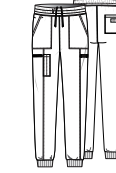
DK645
V-Neck
Top

XS-5XL
(29")



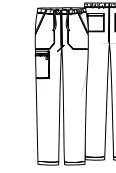
DK015/S/T
Natural Rise
Drawstring
Pant

XS-5XL (32")
[S] XS-3XL (29½")
[T] S-3XL (35")



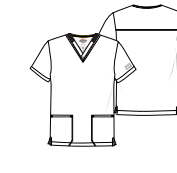
DK223/S/T
Mid Rise
Jogger

XS-5XL (30½")
[S] XS-3XL (28")
[T] S-3XL (33½")



DK019/S/T
Natural Rise
Drawstring
Pant

XXS-5XL (31")
[S] XXS-3XL (28½")
[T] XS-2XL (34")



DK619
V-Neck
Top

XXS-5XL
(28")



DK502
Scrubs
Hat

OS

WOMEN'S STYLES

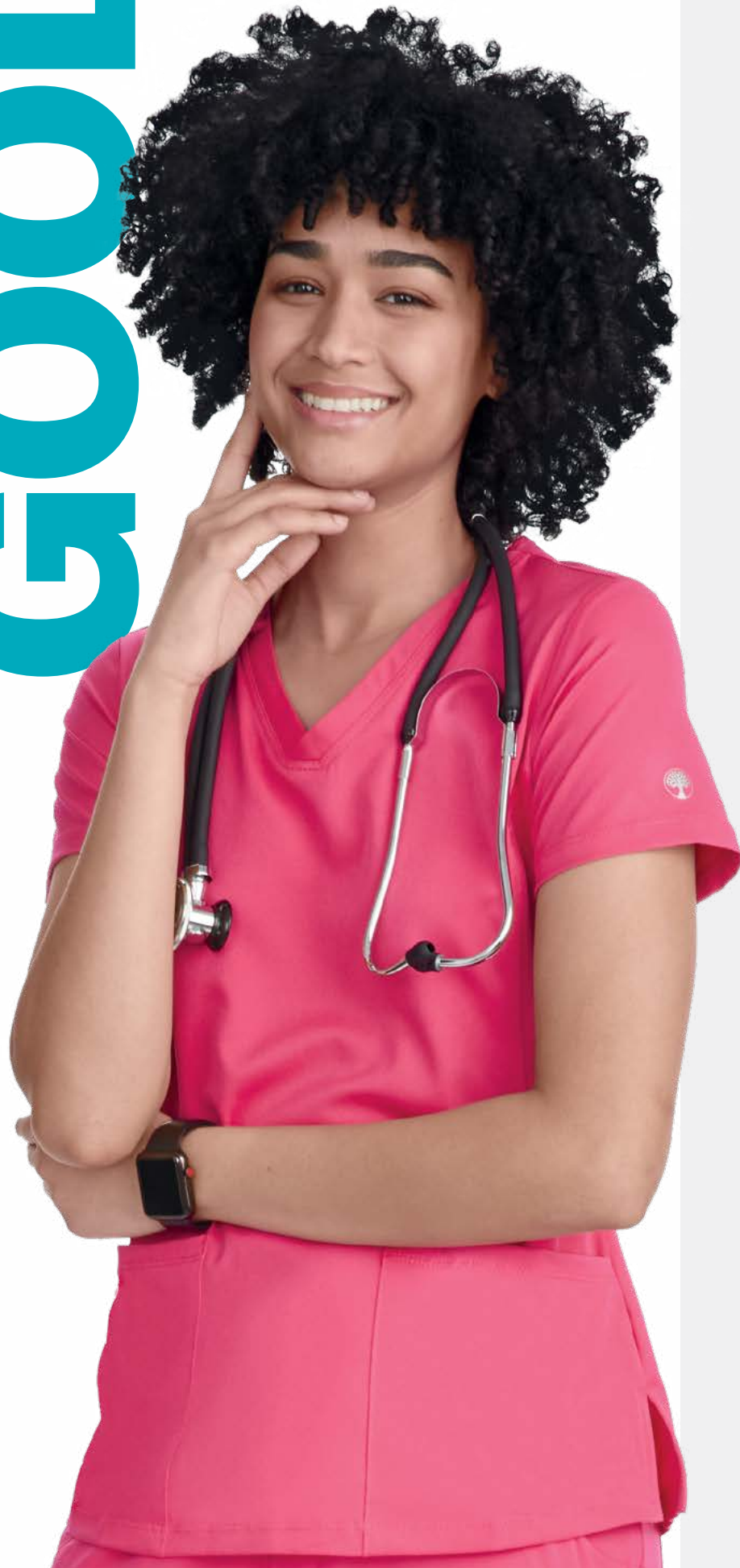
Color	DK615	DK305	DK625	DK005/P/T	DK010/P/T	DK065/P/T
Black (BAPS)	XXS-6XL				XXS-6XL	
Navy (NYPS)	XXS-6XL				XXS-6XL	
Pewter (PWPS)	XXS-6XL				XXS-6XL	
Royal (RYPS)	XXS-6XL				XXS-6XL	
Wine (WNPS)	XXS-6XL				XXS-6XL	
Ciel (CIPS)	XXS-6XL				XXS-6XL	
Caribbean Blue (CAPS)	XXS-6XL				XXS-6XL	No Tall
White (WTPS)	XXS-6XL				XXS-6XL	No Tall
Hunter Green (HNPS)						No Tall
Galaxy Blue (GAB)		N/A			N/A	N/A
Teal Blue (TLPS)						No Tall
Olive (OLV)		N/A	N/A		N/A	N/A
Hot Pink (HPKZ)		N/A	N/A			N/A
Eggplant (EGG)		N/A	N/A			N/A
Red (RED)		N/A	N/A			N/A
Turquoise (TRQ)		N/A	N/A		N/A	N/A

MEN'S STYLES

UNISEX

Color	DK090/P/T	DK635	DK645	DK015/S/T	DK223/S/T	DK019/S/T	DK619	DK502
Black								
Navy								
Pewter								
Royal			N/A					
Wine								N/A
Ciel			N/A					N/A
Caribbean Blue					No Tall	N/A	N/A	N/A
White	N/A					N/A	N/A	N/A
Hunter Green	N/A							N/A
Galaxy Blue	N/A		N/A		No Short or Tall			N/A
Teal Blue	N/A					N/A	N/A	N/A
Olive	N/A				No Short or Tall			N/A
Hot Pink	N/A							N/A
Eggplant	N/A				No Short or Tall			N/A
Red	N/A				No Short or Tall			N/A
Turquoise	N/A							N/A

GOOD



IT WORKS ALL DAY LONG.

Treat your team to the superior style and comfort of HH Works. This inclusive collection offers thoughtful features and is excellent for people of all shapes and sizes.



MOISTURE WICKING



STRETCH FABRIC



MODERN FIT

91 POLY/9 SPANDEX

Offers Women's and Men's fits, sizes XXS to 5XL, with Petite/Short and Tall pant options. (Not all sizes/lengths available in all styles. See matrix for details.)

2500 MONICA Women's Comfort V-Neck Top in Carnation Pink

COLOR AND STYLE MATRIX

2590 MATHEW Four-pocket V-Neck Top	2591 MASON One-pocket V-Neck Top	5590 MICHAEL Warm-up Zip Jacket	9590 RYAN Elastic Waist Drawstring Pant
XS-5XL (30")	XS-5XL (30")	XS-5XL (30")	XS-5XL (32") [S] XS-2XL (29½") [T] S-2XL (35")

	MEN'S STYLES			
Black				
Navy				
Pewter				
Royal				
Ciel		N/A		
Wine				
Caribbean		N/A		
Hunter		N/A		
Teal		N/A		
White		N/A		
Galaxy Blue		N/A	N/A	
Khaki		N/A		

COLOR AND STYLE MATRIX

2500 MONICA Comfort V-Neck Top	2525 MADISON Mock-Wrap Neck Top	2530 MARIAH 2x2 Rib V-Neck Top	4001 FATIMA Long Sleeve Tunic Top	2510 MILA Comfort V-Neck Maternity Top	5500 MEGAN Snap-up Jacket
*XXS-5XL (26½") *Available in 1XL	*XXS-5XL (27") *Available in 1XL	*XXS-5XL (26½") *Available in 1XL	*XS-5XL (30")	*XS-3XL (27½") *Available in 1XL	*XXS-5XL (27") *Available in 1XL

9560 REBECCA Full Elastic Drawstring Pant	9500 RACHEL Athletic Elastic-Waistband Pant	9575 RENEE Full Elastic Jogger Pant	9530 RAINE 2x2 Rib Drawstring Pant	9510 ROSE Comfort Knit Maternity Pant
*XXS-5XL (31½") *[P] XXS-3XL (29½") *[T] XS-2XL (33½") *Available in 1XL	*XXS-5XL (31½") *[P] XXS-3XL (29½") *[T] XS-2XL (33½") *Available in 1XL	*XXS-3XL (28½") *[P] XS-2XL (27") *[T] XS-XL (30") *Available in 1XL	*XXS-5XL (30") *[P] XXS-3XL (28") *[T] XS-2X (32") *Available in 1XL	*XS-3XL (31") *[P] XS-XL (29") *Available in 1XL

	WOMEN'S TOPS					
Black						
Navy						
Pewter						
Royal						
Ciel						
Wine				N/A		
Eggplant				N/A	N/A	
Caribbean				N/A	N/A	
Galaxy Blue			N/A	N/A	N/A	
Teal			N/A		N/A	
White			N/A	N/A	N/A	
Hunter			N/A		N/A	
Red			N/A	N/A	N/A	
Olive		N/A	N/A	N/A	N/A	
Carnation Pink		N/A		N/A	N/A	
Grape		N/A	N/A	N/A	N/A	
Khaki		N/A	N/A	N/A	N/A	

	WOMEN'S PANTS				
Black					
Navy					
Pewter					
Royal					
Ciel					
Wine					
Eggplant					N/A
Caribbean					N/A
Galaxy Blue				N/A	N/A
Teal				N/A	N/A
White				N/A	N/A
Hunter				N/A	N/A
Red			N/A	N/A	N/A
Olive		N/A	N/A	N/A	N/A
Carnation Pink		N/A			N/A
Grape		N/A	N/A	N/A	N/A
Khaki		N/A	N/A	N/A	N/A



LOOK SHARP, FEEL SMOOTH.

Crafted from super-comfy fabric that feels great against the skin, this line is easy to wear and easy to love.



78 POLY/20 RAYON/
2 SPANDEX TWILL

Offers Women's, Men's,
Unisex, and Maternity fits,
sizes XXS to 5XL, with Petite/
Short and Tall pant options.

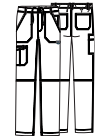



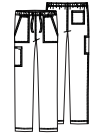


WW603 Men's V-Neck Top in
Wine (WIN)

COLOR AND STYLE MATRIX

WW011/P/T Natural Rise Jogger	WW601 V-Neck Top	WW301 Zip Front High-Low Jacket	WW602 Round Neck Top	WW698 Snap Front Polo Shirt	WW012/S/T Jogger	WW603 V-Neck Top	WW615 Polo Shirt
XXS-5XL (31") [P] XXS-2XL (28½") [T] XS-2XL (34")	XXS-5XL (26")	XXS-5XL (27")	XXS-5XL (26")	XXS-5XL (24")	XS-5XL (31") [S] XS-3XL (28½") [T] S-2XL (34")	XS-5XL (28½")	XS-5XL (28½")

	WOMEN'S ACTIVE STYLES				MEN'S ACTIVE STYLES			
Black (BLK)								
Navy (NAV)								
Pewter (PWT)								
Royal (ROY)					N/A			N/A
Wine (WIN)			N/A		N/A			
Ciel (CIE)			N/A	N/A	N/A			N/A
Hunter Green (HUN)			N/A	N/A	N/A			N/A
Caribbean Blue (CAR)			N/A	N/A	N/A			N/A
Teal Blue (TLB)			N/A	N/A	N/A			N/A
Red (RED)			N/A	N/A	N/A	N/A	N/A	
Khaki (KAK)	N/A	N/A	N/A	N/A	N/A	N/A	N/A	

**COLOR AND
STYLE MATRIX**

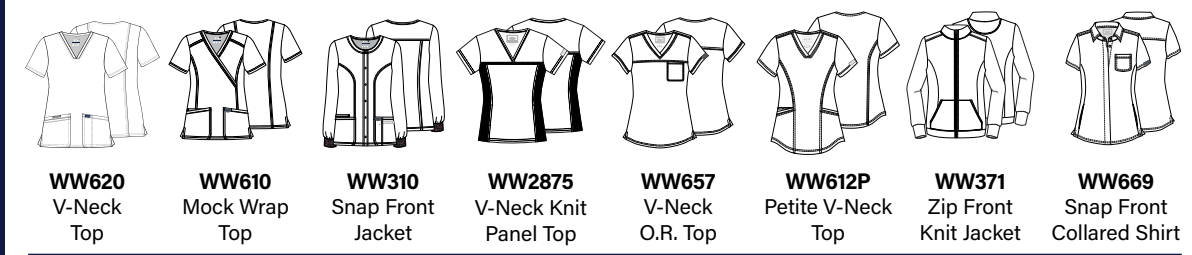
						
WW140/S/T Fly Front Cargo Pant	WW670 V-Neck Top	WW690 V-Neck Top	WW320 Zip Front Jacket	WW020/S/T Drawstring Cargo Pant	WW625 V-Neck Top	WW550 Bouffant Scrubs Hat
XS-5XL (32") [S] XS-3XL (29½") [T] S-2XL (35")	XS-5XL (29")	XS-5XL (29")	XS-5XL (27")	XXS-5XL (31") [S] XXS-3XL (28½") [T] XS-2XL (34")	XXS-5XL (27½")	OS

	MEN'S STYLES				UNISEX STYLES		
Black (BLK)							
Navy (NAV)							
Pewter (PWT)							
Royal (ROY)							
Ciel Blue (CIE)				N/A			N/A
Caribbean Blue (CAR)				N/A			N/A
Wine (WIN)				N/A			N/A
Hunter Green (HUN)				N/A	N/A	N/A	N/A
White (WHT)							N/A
Teal Blue (TLB)				N/A	N/A	N/A	N/A
Grey (GRY)				N/A	N/A	N/A	N/A
Red (RED)				N/A	N/A	N/A	N/A
Galaxy Blue (GAB)				N/A	N/A	N/A	N/A
Olive (OLV)				N/A	N/A	N/A	N/A
Khaki (KAK)				N/A	N/A	N/A	N/A
Grape (GRP)				N/A	N/A	N/A	N/A

WW610 Women's Mock Wrap Top
in Galaxy Blue (GAB)

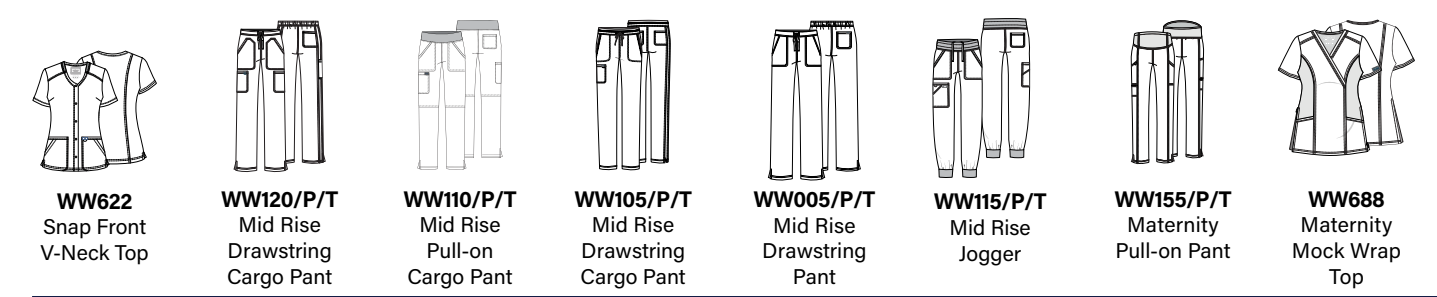


COLOR AND STYLE MATRIX



WW620 V-Neck Top	WW610 Mock Wrap Top	WW310 Snap Front Jacket	WW2875 V-Neck Knit Panel Top	WW657 V-Neck O.R. Top	WW612P Petite V-Neck Top	WW371 Zip Front Knit Jacket	WW669 Snap Front Collared Shirt
XXS-5XL (27")	XXS-5XL (26")	XXS-5XL (27½")	XXS-5XL (24½")	XXS-5XL (26")	XXS-3XL (24")	XS-5XL (26")	XXS-5XL (26")

	WOMEN'S TOPS							
Black (BLK)								[Poly/Spandex Brushed Jersey Knit]
Navy (NAV)								[Poly/Spandex Brushed Jersey Knit]
Pewter (PWT)								N/A
Royal (ROY)								N/A
Wine (WIN)								N/A
Ciel Blue (CIE)								N/A
Caribbean Blue (CAR)				N/A				N/A
Hunter Green (HUN)				N/A	N/A	N/A		N/A
Red (RED)				N/A	N/A	N/A		N/A
White (WHT)				N/A	N/A	N/A		N/A
Teal Blue (TLB)						N/A		N/A
Eggplant (EGG)				N/A	N/A	N/A		N/A
Galaxy Blue (GAB)				N/A	N/A	N/A		N/A
Grape (GRP)				N/A	N/A	N/A		N/A
Olive (OLV)				N/A	N/A	N/A		N/A
Electric Pink (EPI)				N/A	N/A	N/A		N/A
Grey (GRY)			N/A	N/A	N/A	N/A		N/A
Khaki (KAK)				N/A	N/A	N/A		N/A
Turquoise (TRQ)				N/A	N/A	N/A		N/A



WW622 Snap Front V-Neck Top	WW120/P/T Mid Rise Drawstring Cargo Pant	WW110/P/T Mid Rise Pull-on Cargo Pant	WW105/P/T Mid Rise Drawstring Cargo Pant	WW005/P/T Mid Rise Drawstring Cargo Pant	WW115/P/T Mid Rise Jogger	WW155/P/T Maternity Pull-on Pant	WW688 Maternity Mock Wrap Top
XXS-5XL (26")	XXS-5XL (31") [P] XXS-2XL (28½") [T] XS-2XL (34")	XXS-5XL (31") [P] XXS-2XL (28½") [T] XS-2XL (34")	XXS-5XL (31") [P] XXS-2XL (28½") [T] XS-2XL (34")	XXS-5XL (31") [P] XXS-2XL (28½") [T] XS-2XL (34")	XXS-5XL (28½") [P] XXS-2XL (26") [T] XS-2XL (31½")	XXS-3XL (30") [P] XS-2XL (27½") [T] S-XL (33")	XXS-3XL (27")

WOMEN'S TOPS	WOMEN'S PANTS				MATERNITY STYLES	
Black (BLK)	[P] XXS-3XL	[P] XXS-3XL				
Navy (NAV)	[P] XXS-3XL	[P] XXS-3XL				
Pewter (PWT)	[P] XXS-3XL	[P] XXS-3XL				
Royal (ROY)	[P] XXS-3XL	[P] XXS-3XL				
Wine (WIN)	[P] XXS-3XL	[P] XXS-3XL		N/A		No Petite or Tall
Ciel Blue (CIE)				N/A		No Petite or Tall
Caribbean Blue (CAR)				N/A	N/A	No Petite or Tall
Hunter Green (HUN)				N/A	N/A	N/A
Red (RED)				N/A	N/A	N/A
White (WHT)				N/A	N/A	N/A
Teal Blue (TLB)				N/A	N/A	N/A
Eggplant (EGG)				N/A	N/A	N/A
Galaxy Blue (GAB)			N/A	N/A	N/A	N/A
Grape (GRP)			N/A	N/A	N/A	N/A
Olive (OLV)			N/A	N/A	N/A	N/A
Electric Pink (EPI)			N/A	N/A	N/A	N/A
Grey (GRY)			N/A	N/A	N/A	N/A
Khaki (KAK)			N/A	N/A	N/A	N/A
Turquoise (TRQ)			N/A	N/A	N/A	N/A

BETTER



STRETCH FOR SUCCESS.

Easy-care styles your team will love to wear, in a luxuriously soft cotton blend with a touch of spandex.



DURABLE



EXTRA SOFT



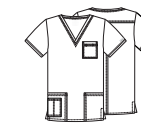
TWO-WAY STRETCH

55 COTTON/42 POLY/
3 SPANDEX TWILL

Offers Women's, Men's and Unisex fits in sizes XXS to 5XL, with Petite/Short and Tall options.

WW630 Women's V-Neck Top in Caribbean Blue (CARW)

COLOR AND STYLE MATRIX



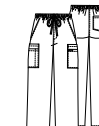
4725 V-Neck Top

XS-5XL (28")



4043 Drawstring Cargo Pant

XS-5XL (31")



4243 Fly Front Cargo Pant

XS-5XL (31")



4743 V-Neck Top

XS-5XL (29")

	UNISEX STYLES		MEN'S STYLES	
Navy (NAVW)				
Black (BLKW)				
Pewter (PWTW)				
Royal (ROYW)				
Caribbean Blue (CARW)				
Hunter Green (HUNW)				
Wine (WINW)				
Ciel (CIEW)				
White (WHTW)				



4727 V-Neck Top

XXS-5XL (27")



4315 Zip Front Jacket

XXS-5XL (27")



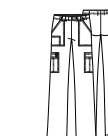
4728 Mock Wrap Top

XXS-5XL (27")



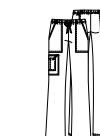
WW630 V-Neck Top

XXS-5XL (26")



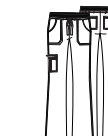
4005/P/T Mid Rise Pull-on Cargo Pant

XXS-5XL (31") [P] XXS-2XL (28½") [T] XS-2XL (34")



4044/P/T Mid Rise Drawstring Cargo Pant

XXS-5XL (31") [P] XXS-2XL (28½") [T] XS-2XL (34")



24001/P/T Drawstring Cargo Pant

XXS-3XL (31") [P] XXS-2XL (28½") [T] XS-2XL (34")

	WOMEN'S TOPS				WOMEN'S PANTS		
Black (BLKW)							
Navy (NAVW)							
Pewter (PWTW)							
Royal (ROYW)							
Wine (WINW)							
White (WHTW)							
Ciel (CIEW)							
Caribbean Blue (CARW)							No Tall
Hunter Green (HUNW)							No Tall



A FIT THAT WON'T QUIT.

Soft knit panels and ultra-flexible four-way stretch fabric ensure a comfy, flattering fit for every body.



360° STRETCH



MOISTURE WICKING



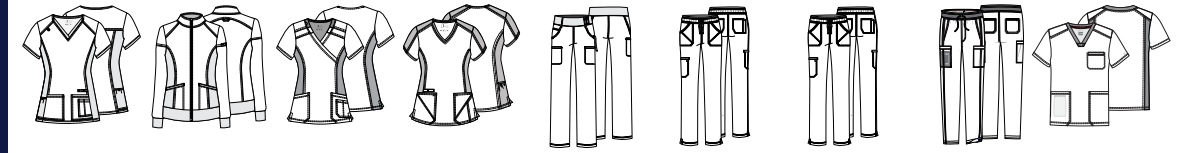
KNIT PANELS

94 POLY/6 SPANDEX CROSSHATCH DOBBY

Offers Women's and Men's fits in sizes XXS to 5XL, with Petite/Short and Tall options.

CK711 Women's V-Neck Top in Royal (ROY)

COLOR AND STYLE MATRIX



CK605 V-Neck Knit Panel Top	CK303 Zip Front Jacket	CK680 Mock Wrap Knit Panel Top	CK711 V-Neck Top	CK002/ P/T Mid Rise Pull-on Pant	CK011/P Mid Rise Jogger	CK010/P/T Mid Rise Drawstring Pant	CK006/ S/T Drawstring Cargo Pant	CK661 V-Neck Top
XXS-5XL (26")	XXS-5XL (26")	XXS-5XL (26")	XXS-3XL (26")	XXS-5XL (31") [P] XXS-2XL (28½") [T] XS-2XL (34")	XXS-3XL (29") [P] XXS-2XL (27½")	XXS-5XL (30½") [P] XXS-2XL (28") [T] XS-2XL	XS-5XL (31½") [S] XS-3XL (29") [T] S-2XL (34½")	XS-5XL (29½")

	WOMEN'S TOPS			WOMEN'S PANTS			MEN'S STYLES	
Black (BLK)								
Navy (NAV)								
Pewter (PWT)								
Royal (ROY)								
Caribbean Blue (CAR)			N/A			N/A	N/A	N/A
Wine (WIN)			N/A			N/A		
Ciel (CIE)			N/A			N/A		
Hunter Green (HUN)			N/A	N/A		N/A		
White (WHT)			N/A	N/A		N/A	N/A	N/A
Galaxy Blue (GAB)		N/A	N/A	N/A		N/A	N/A	N/A
Red (RED)		N/A	N/A	N/A	No Petite or Tall	N/A	N/A	N/A
Eggplant (EGG)		N/A	N/A	N/A	No Petite or Tall	N/A	N/A	N/A

BETTER



BALANCE

CHECKS ALL THE BOXES.

Professional polish? Easy-care comfort? Styles from sporty to sophisticated? Balance gets it right.



SIGNATURE STYLING



2-WAY STRETCH



DRAPES PERFECTLY

77 POLY/20 RAYON/3 SPANDEX TWILL

Offers Men's and Women's fits, sizes XXS to 5XL, with Petite/Short and Tall options.

DK370 Men's Zip Front Bomber Jacket in Pewter (PWT)

COLOR AND STYLE MATRIX



DK875 V-Neck Top With Rib-Knit Panels

XXS-5XL (26")



DK870 V-Neck Top With Rib-Knit Panels

XXS-5XL (27")



DK840 Mock Wrap Top

XXS-5XL (26")



DK365 Zip Front Jacket

XXS-5XL (24½")

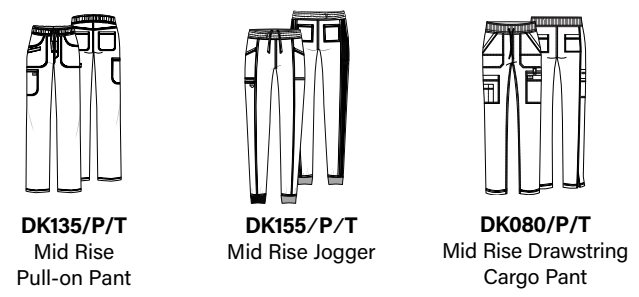
WOMEN'S TOPS

Black (BLK)				
Navy (NAV)				
Pewter (PWT)				
Royal (ROY)			N/A	
Wine (WIN)			N/A	N/A
Caribbean Blue (CAR)			N/A	N/A
Ciel Blue (CIE)			N/A	
Hunter Green (HUN)		N/A	N/A	N/A
White (WHT)		N/A	N/A	N/A

DK365 Zip Front Jacket in Ciel Blue (CIE)



COLOR AND STYLE MATRIX



DK135/P/T
Mid Rise Pull-on Pant
XXS-5XL (30")
[P] XXS-2XL (27½")
[T] XS-2XL (33")

DK155/P/T
Mid Rise Jogger
XXS-5XL (29")
[P] XXS-2XL (26½")
[T] XS-2XL (32")

DK080/P/T
Mid Rise Drawstring Cargo Pant
XXS-5XL (30½")
[P] XXS-2XL (28")
[T] XS-2XL (33½")

WOMEN'S PANTS

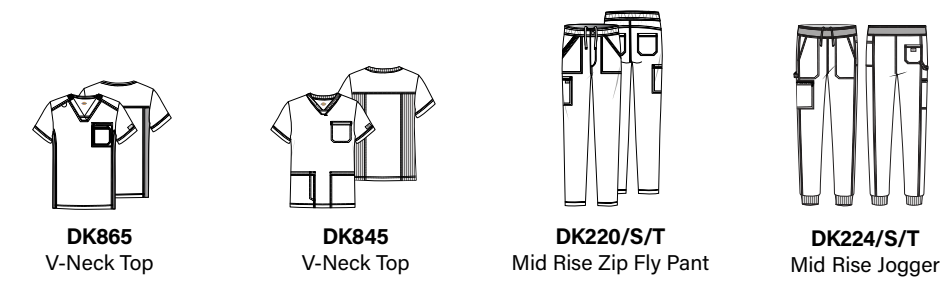
Black (BLK)			
Navy (NAV)			
Pewter (PWT)			
Royal (ROY)			
Wine (WIN)			
Caribbean Blue (CAR)			
Ciel (CIE)			
Hunter Green (HUN)	N/A		N/A
White (WHT)		N/A	N/A



DK865 V-Neck Top and DK224/S/T Mid Rise Jogger in Caribbean Blue (CAR)



DK865 V-Neck Top in Navy (NAV)



DK865
V-Neck Top
XS-5XL (29")

DK845
V-Neck Top
XS-5XL (30")

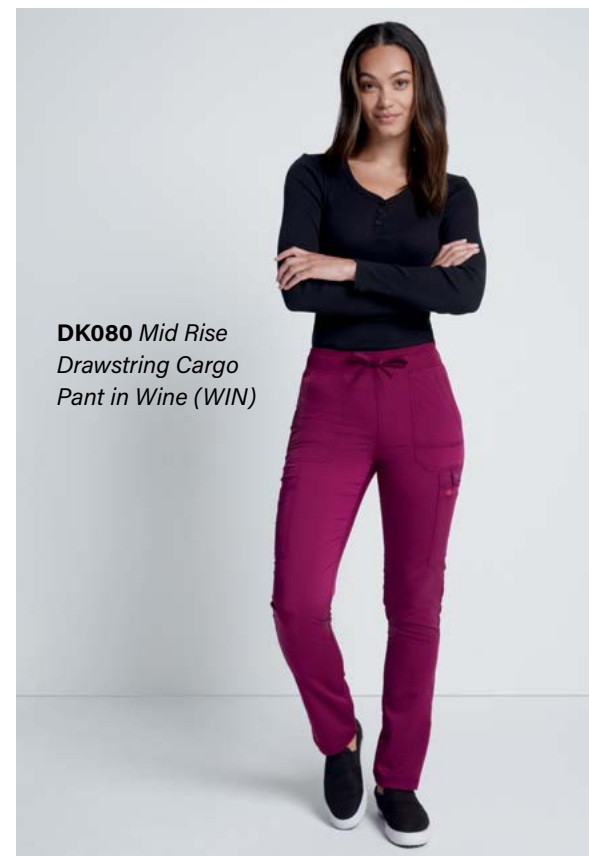
DK220/S/T
Mid Rise Zip Fly Pant
XS-5XL (31½")
[S] XS-3XL (29")
[T] S-2XL (34½")

DK224/S/T
Mid Rise Jogger
XS-5XL (30")
[S] XS-3XL (27½")
[T] S-2XL (33")

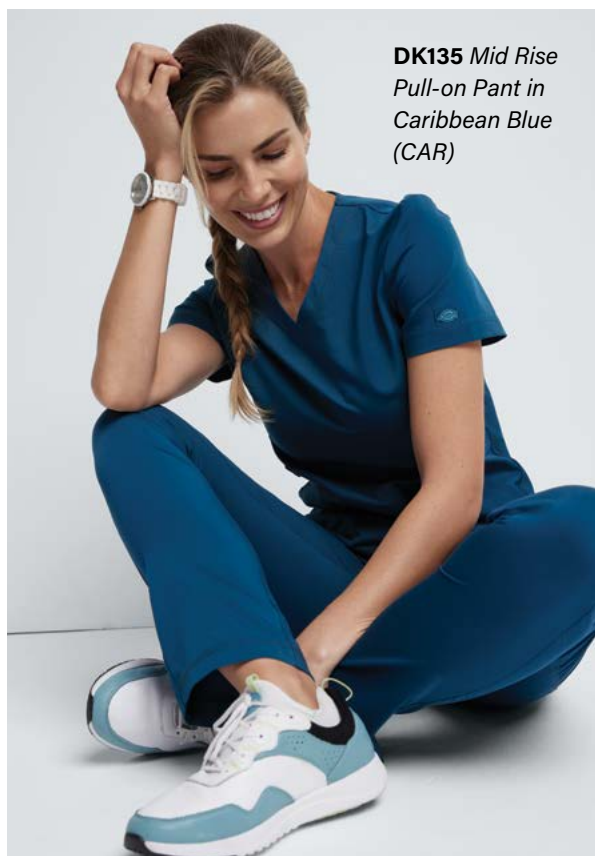
MEN'S TOPS

MEN'S PANTS

Black (BLK)				
Navy (NAV)				
Pewter (PWT)				
Caribbean Blue (CAR)		N/A		
Ciel (CIE)	N/A	N/A		N/A
Royal (ROY)		N/A		
Wine (WIN)	N/A	N/A		N/A
White (WHT)	N/A	N/A		N/A
Hunter Green (HUN)	N/A	N/A		N/A
Galaxy Blue (GAB)	N/A	N/A		N/A
Teal (TLB)	N/A	N/A		N/A



DK080 Mid Rise Drawstring Cargo Pant in Wine (WIN)



DK135 Mid Rise Pull-on Pant in Caribbean Blue (CAR)



LOOK GOOD, FEEL GREAT.

Created with a wonderful fabric that's lightweight, soft, breathable, wrinkle-free, and fade-resistant, the stylish and comfortable Purple Label collection is a sure winner.



STRETCH FABRIC



BREATHABLE



EASY CARE

77 POLY/20 RAYON/3 SPANDEX

Offers Women's and Men's fits, sizes XXS to 5XL, with Petite/Short and Tall pant options. (Not all sizes/lengths available in all styles. See matrix for details.)

2245 JULIET Yoga Knit V-Neck Top in Royal

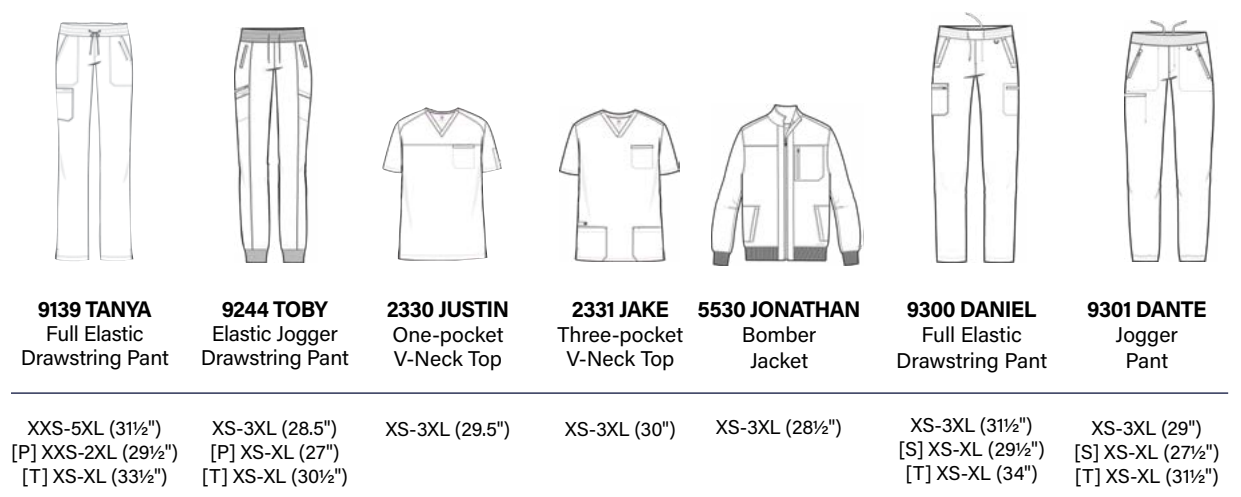
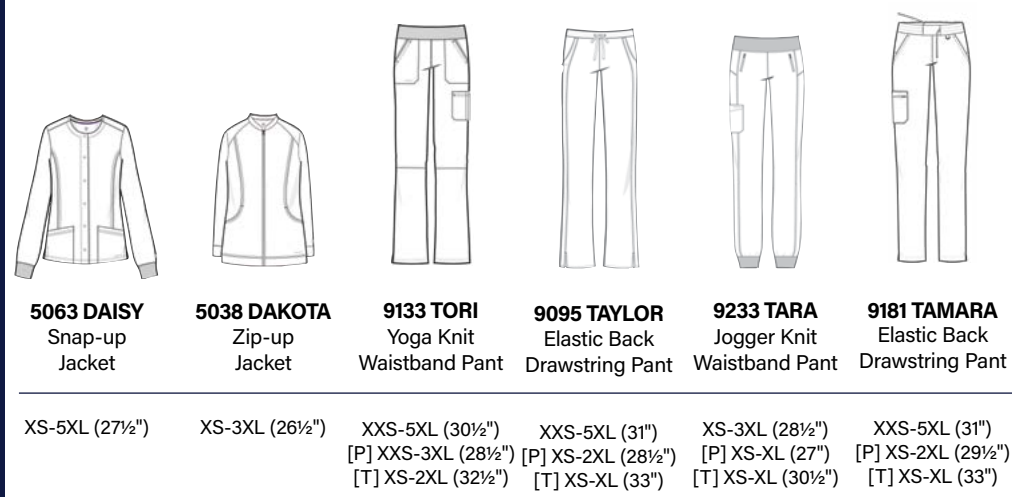
COLOR AND STYLE MATRIX

2245 JULIET Yoga Knit V-Neck Top	2167 JANE Triple-Needle Y-Neck Top	2278 JASMIN Satin Ribbon V-Neck Top	2320 JILL Curved V-Neck Top	2172 JORDAN Mock-Wrap Neck Top	2321 JADA One-pocket V-Neck Top	2152 JOURNEY Mandarin- Collar Boxy Top
XXS-5XL (27")	XXS-5XL (26.5")	XS-5XL (27")	XXS-5XL (27")	XS-3XL (26.5")	XS-3XL (27")	XS-2XL (26")

WOMEN'S TOPS

Black						
Navy						
Pewter						
Royal						
Ciel						
Wine						
Eggplant					N/A	N/A
Caribbean					N/A	N/A
Galaxy Blue					N/A	N/A
Teal					N/A	N/A
White						
Heather Grey		N/A	N/A		N/A	
Red			N/A	N/A	N/A	N/A
Hunter					N/A	N/A
Shocking Pink		N/A	N/A	N/A	N/A	N/A
Grape		N/A	N/A	N/A	N/A	N/A
Khaki		N/A	N/A	N/A	N/A	N/A
Turquoise		N/A	N/A	N/A	N/A	N/A
Grey		N/A	N/A	N/A	N/A	N/A

COLOR AND STYLE MATRIX



	WOMEN'S JACKETS		WOMEN'S PANTS			
Black						
Navy						
Pewter						
Royal						
Ciel						
Wine		N/A				
Eggplant		N/A				
Caribbean		N/A				
Galaxy Blue		N/A			N/A	N/A
Teal		N/A				
White						
Heather Grey	N/A			N/A		
Red		N/A				N/A
Hunter		N/A				N/A
Shocking Pink	N/A	N/A		N/A	N/A	N/A
Grape	N/A	N/A		N/A	N/A	N/A
Khaki	N/A	N/A		N/A	N/A	N/A
Turquoise	N/A	N/A		N/A	N/A	N/A
Grey	N/A	N/A		N/A	N/A	N/A

	WOMEN'S PANTS		MEN'S STYLES				
Black							
Navy							
Pewter					N/A		
Royal					N/A		
Ciel					N/A		
Wine					N/A		
Eggplant			N/A	N/A	N/A	N/A	N/A
Caribbean					N/A		
Galaxy Blue			N/A	N/A	N/A	N/A	N/A
Teal	N/A		N/A	N/A	N/A	N/A	N/A
White			N/A	N/A	N/A	N/A	N/A
Heather Grey	N/A				N/A		N/A
Red	N/A	N/A	N/A	N/A	N/A	N/A	N/A
Hunter	N/A				N/A		
Shocking Pink	N/A	N/A	N/A	N/A	N/A	N/A	N/A
Grape	N/A	N/A	N/A	N/A	N/A	N/A	N/A
Khaki	N/A	N/A	N/A	N/A	N/A	N/A	N/A
Turquoise	N/A	N/A	N/A	N/A	N/A	N/A	N/A
Grey	N/A	N/A	N/A	N/A	N/A	N/A	N/A

XS-5XL (27½") XS-3XL (26½") XXS-5XL (30½")
 [P] XXS-3XL (28½") [P] XS-2XL (28½") [T] XS-2XL (32½")
 XXS-5XL (31") [P] XS-2XL (28½") [T] XS-XL (33")
 XS-3XL (28½") [P] XS-XL (27") [T] XS-XL (30½")
 XXS-5XL (31") [P] XS-2XL (29½") [T] XS-XL (33")

XXS-5XL (31½") [P] XXS-2XL (29½") [T] XS-XL (33½")
 XS-3XL (28.5") [P] XS-XL (27") [T] XS-XL (30½")
 XS-3XL (29.5") XS-3XL (30") XS-3XL (28½")
 XS-3XL (31½") [S] XS-XL (29½") [T] XS-XL (34")
 XS-3XL (29") [S] XS-XL (27½") [T] XS-XL (31½")

BETTER



AN INSIGHTFUL CHOICE.

Med Couture's athletic-inspired Insight collection offers super-soft fabric with a beautiful drape and a great fit.




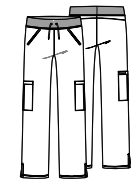
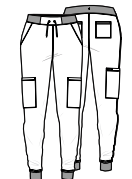

-  MECHANICAL STRETCH
-  MOISTURE WICKING
-  ULTRA SOFT
-  BREATHABLE

100 POLY
Offers Women's fits, sizes XXS to 5XL, with Petite/Tall pant options.

2411 Women's Three-pocket Top and **2711** Jogger Pant in Wine (WINE)

COLOR AND STYLE MATRIX

INSIGHT

					
2411 Three-pocket Top	2468 Side Pocket Top	2432 One-pocket Top	2702 Yoga Waist Pant	2711 Jogger Pant	2660 Warm-up Jacket
XXS-5XL (27")	XS-3XL (27")	XXS-5XL (27")	XXS-5XL (30½") [P] XS-XL (28½") [T] XS-XL (33")	XXS-5XL (28½") [P] XS-XL (26½") [T] XS-XL (31")	XS-5XL (26")

	WOMEN'S TOPS			WOMEN'S PANTS		WOMEN'S JACKET
Black (BLAC)						
Ceil (CEIL)						
Cloud (CLOD)						
Coral (CRAL)						N/A
Galaxy (GLXY)						
Grape (GRAP)						
Hunter (HNTR)						
Lilac (LILA)						N/A
Navy (NAVY)						
Olive (OLIV)						
Pewter (PWTR)						
Royal (ROYL)						
Taffy Pink (TFPK)						N/A
Teal Blue (TEAL)						N/A
Wine (WINE)						

BETTER



ROTH WEAR

MADE FOR MEN.

For the guys in your group, RothWear by Med Couture offers Insight collection styles for men in six of the most popular core colors.

-  MECHANICAL STRETCH
-  MOISTURE WICKING
-  ULTRA SOFT
-  BREATHABLE

100 POLY

Offers Men's fits, sizes XS to 5X, with Short/Tall pant options.

2486 Men's Three-pocket Top and **2772** Straight Leg Pant in Ciel (CIEL)

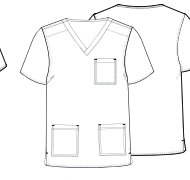
COLOR AND STYLE MATRIX

INSIGHT



2478
One-pocket Top

XS-5XL (30")



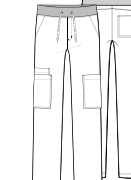
2486
Three-pocket Top

XS-5XL (30")



2765
Jogger Pant

XS-5XL (29½")
[S] XS-3XL (27")
[T] XS-3XL (31½")



2772
Straight Leg Pant

XS-5XL (31")
[S] XS-3XL (28½")
[T] XS-3XL (33")

	MEN'S TOPS		MEN'S PANTS	
Black (BLAC)				
Ciel (CEIL)				
Navy (NAVY)				
Pewter (PWTR)				
Royal (ROYL)				
Wine (WINE)				

2772 Men's Straight Leg Pant and **2486** One-pocket Top in Wine (WINE)



BEST



DYNAMIX™

SPORTS-INSPIRED PERFORMANCE.

This line takes its cue from high-end athleisure wear, with features and fabrics that help your team perform at its highest level.



FOUR-WAY STRETCH



MOISTURE WICKING



LIGHTWEIGHT

91 POLY/9 SPANDEX TEXTURED DOBBY

Offers Men's and Women's fits, sizes XXS to 5XL, with Petite/Short and Tall options.

DK740 Women's Mélange V-Neck Top Navy (NAV)

COLOR AND STYLE MATRIX



DK730 V-Neck Top

XXS-5XL (26")



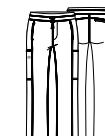
DK330 Zip Front Warm-up Jacket

XXS-5XL (25½")



DK740 Mélange V-Neck Top

XXS-5XL (26")
Mélange Knit



DK130/P/T Mid Rise Drawstring Pant

XXS-5XL (30½") [P] XXS-2XL (28") [T] XS-2XL (33½")



DK185/P/T Natural Rise Jogger

XXS-3XL (28½") [P] XXS-2XL (26") [T] XS-2XL (31½")

WOMEN'S TOPS

WOMEN'S PANTS

Black (BLK)			N/A		
Navy (NAV)			N/A		N/A
Pewter (PEW)			N/A		
Royal (ROY)			N/A		
Caribbean Blue (CAR)			N/A		No Tall
Wine (WIN)			N/A		No Tall
Ciel (CIE)			N/A		N/A
White (WHT)		N/A	N/A	No Petite or Tall	N/A
Navy/Black (NAVBLK)	N/A	N/A		NAVBLK	N/A
Black/Hot Pink (BKHT)	N/A	N/A		HPKZ	N/A
Pewter/Red (PWRD)	N/A	N/A		RED	N/A



DK610 Men's V-Neck Top in Ciel (CIE)
Top in Ciel (CIE)

COLOR AND STYLE MATRIX

DK610 V-Neck Top	DK640 V-Neck Top	DK310 Zip Front Warm-up Jacket	DK040/S/T Natural Rise Jogger	DK110/S/T Natural Rise Zip Fly Cargo Pant
XS-5XL (29")	XS-5XL (30")	XS-5XL (27")	XS-5XL (30") [S] XS-3XL (27½") [T] S-2XL (33")	XS-5XL (32") [S] XS-3XL (29½") [T] XS-3XL (35½")

MEN'S STYLES				
Black (BLK)				
Navy (NAV)				
Pewter (PEW)				
Royal (ROY)		N/A		
Wine (WIN)		N/A	No Tall	
Caribbean Blue (CAR)		N/A	N/A	
Ciel (CIE)		N/A	N/A	
White (WHT)		N/A	N/A	No Small, No Tall



DK640 Men's V-Neck Top in White (WHT)

BEST
EST



Infinity
by CHEROKEE
UNIFORMS

**FOR HEALTHCARE
PROS IN MOTION.**

Suit up in uniforms offering flexible comfort and fit, thoughtful features, and Certainty® antimicrobial fabric technology.



360° STRETCH



CERTAINTY®
TECHNOLOGIES



MOISTURE WICKING

95 POLYESTER/5 SPANDEX JERSEY
KNIT

*Offers Women's and Men's
fits, sizes XXS to 5XL, with
Petite/Short and Tall options,
plus a dress and skirt.*

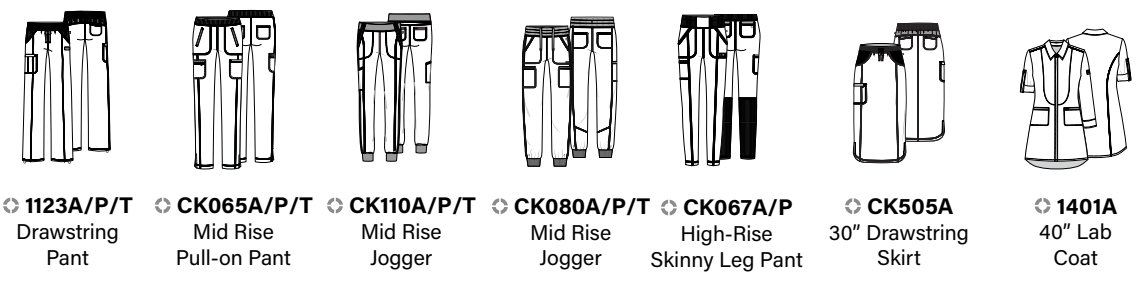
CK2624A Women's Round Neck
Top in Wine (WNPS)

CK781A Women's Long
Sleeve Round Neck Top in
Pewter (PWPS) and Men's
CK900A V-Neck Top in
Black (BAPS)



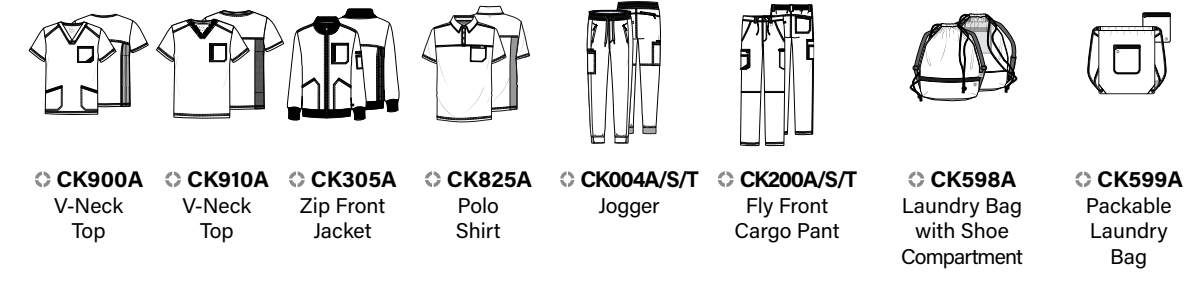
For extra protection, Certainty® antimicrobial fabric technology is integrated into Infinity solid and colorblock scrubs, lab coats, and laundry bags. Wash all garments thoroughly after each use. Items featuring antimicrobial technology do not protect users or others against bacteria, viruses, or disease organisms. Always follow all best practices for infection prevention. Visit CertaintyTechnologies.com for details.

COLOR AND STYLE MATRIX



1123A/P/T Drawstring Pant	CK065A/P/T Mid Rise Pull-on Pant	CK110A/P/T Mid Rise Jogger	CK080A/P/T Mid Rise Jogger	CK067A/P High-Rise Skinny Leg Pant	CK505A 30" Drawstring Skirt	1401A 40" Lab Coat
XXS-5XL (31") [P] XXS-2XL (28½") [T] XS-2XL (34")	XXS-5XL (30½") [P] XXS-2XL (28") [T] XS-2XL (33½")	XXS-5XL (28½") [P] XXS-2XL (26") [T] XS-2XL (31½")	XXS-5XL (28½") [P] XXS-2XL (26") [T] XS-2XL (31½")	XS-3XL (28½") [P] XS-2XL (26")	XXS-3XL (30")	XXS-3XL (40")

	WOMEN'S PANTS				WOMEN'S STYLES		
Black (BAPS)							XS-3XL
Navy (NYPS)							N/A
Pewter (PWPS)							N/A
Royal (RYPS)							N/A
Caribbean Blue (CAPS)			No Tall				N/A
Wine (WNPS)			No Tall				N/A
White (WTPS)			No Tall				
Ciel (CIPS)			No Tall				N/A
Teal Blue (TLPS)			No Tall				N/A
Hunter Green (HNPS)		N/A	No Tall				N/A
Carmine Pink (CPPS)		N/A	No Tall				N/A
Red (RED)		N/A	No Tall				N/A
Olive (OLPS)		N/A	N/A				N/A
Galaxy Blue (GAB)		N/A	No Tall				N/A
Eggplant (EGG)		N/A	N/A				N/A
Grape (GRP)		N/A	N/A				N/A
Turquoise (TRQ)		N/A	N/A				N/A
Grey (GRY)		N/A	N/A				N/A
Khaki (KAK)		N/A	No Tall				N/A



CK900A V-Neck Top	CK910A V-Neck Top	CK305A Zip Front Jacket	CK825A Polo Shirt	CK004A/S/T Jogger	CK200A/S/T Fly Front Cargo Pant	CK598A Laundry Bag with Shoe Compartment	CK599A Packable Laundry Bag
XS-5XL (29½")	XS-5XL (29½")	XS-5XL (28")	XS-5XL (29½")	XS-5XL (31") [S] XS-3XL (28½") [T] S-2XL (34")	XS-5XL (32") [S] XS-3XL (29½") [T] S-2XL (35")	OS	OS

	MEN'S TOPS				MEN'S PANTS		ACCESSORIES	
Black (BAPS)								
Navy (NYPS)								
Pewter (PWPS)								
Royal (RYPS)			N/A	N/A			N/A	N/A
Caribbean Blue (CAPS)			N/A	N/A	No Tall		N/A	N/A
Wine (WNPS)		N/A	N/A	N/A	No Tall		N/A	N/A
Ciel (CIPS)		N/A	N/A	N/A	No Tall		N/A	N/A
Hunter Green (HNPS)		N/A	N/A	N/A			N/A	N/A
Grey (GRY)		N/A	N/A	N/A	N/A		N/A	N/A
Olive (OLPS)				N/A	N/A		N/A	N/A
White (WTPS)		N/A	N/A	N/A	N/A		N/A	N/A
Teal Blue (TLPS)		N/A	N/A	N/A	N/A		N/A	N/A
Galaxy Blue (GAB)		N/A	N/A	N/A	No Short or Tall		N/A	N/A
Red (RED)		N/A		N/A	N/A		N/A	N/A
Eggplant (EGG)		N/A	N/A	N/A	N/A		N/A	N/A
Khaki (KAK)		N/A	N/A	N/A	N/A		N/A	N/A

BEST



FORM
by CHEROKEE
UNIFORMS

TOP FORM, PEAK FUNCTION.

Exceedingly versatile, incredibly durable with ultra-sophisticated lines to elevate your image to new heights.



360° STRETCH



MOISTURE WICKING



EASY CARE

86 NYLON/14 SPANDEX KNIT

Offers Men's and Women's fits, sizes XXS to 3XL, with Petite/Short and Tall options.

CK819 Women's Tuckable V-Neck Top in Pewter (PWT)

COLOR AND STYLE MATRIX



CK840
V-Neck Top

XXS-3XL
(26")



CK390
Zip Front Jacket

XXS-3XL
(26")



CK819
Tuckable V-Neck Top

XXS-3XL
(25")

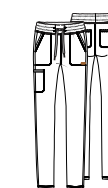


CK843
V-Neck Top

XXS-3XL
(26")

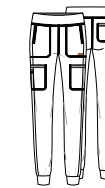
WOMEN'S TOPS

Color	CK840	CK390	CK819	CK843
Black (BLK)				
Navy (NAV)				
Pewter (PWT)				
Royal (ROY)		N/A		
Wine (WIN)		N/A		
Caribbean Blue (CAR)		N/A		N/A
Teal Blue (TLB)		N/A	N/A	N/A
Ciel Blue (CIE)		N/A	N/A	N/A
Olive Branch (OLBA)		N/A	N/A	N/A
Hunter Green (HUN)		N/A	N/A	N/A



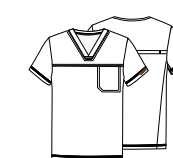
CK095/P/T
Mid Rise Drawstring Pant

XXS-3XL (29")
[P] XXS-2XL (26½")
[T] XS-2XL (32")



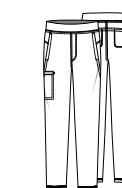
CK092/P/T
Mid Rise Jogger

XXS-3XL (26")
[P] XXS-2XL (28½")
[T] XS-2XL (31½")



CK885
V-Neck Top

XS-3XL (28")



CK185/S/T
Men's Pull-on Cargo Pant

XS-3XL (31")
[S] XS-3XL (28½")
[T] S-2XL (34")



CK399
Men's Zip Front Jacket

XS-3XL (27½")

WOMEN'S PANTS

Color	CK095/P/T	CK092/P/T
Black (BLK)		
Navy (NAV)		
Pewter (PWT)		
Royal (ROY)		
Wine (WIN)		
Caribbean Blue (CAR)		N/A
Teal Blue (TLB)		N/A
Ciel Blue (CIE)		N/A
Olive Branch (OLBA)		N/A
Hunter Green (HUN)		N/A

MEN'S STYLES

Color	CK885	CK185/S/T	CK399
Black (BLK)		No Short, No Tall	
Navy (NAV)		No Short, No Tall	
Pewter (PWT)		No Short, No Tall	
Royal (ROY)	N/A	N/A	N/A
Wine (WIN)	N/A	N/A	N/A
Caribbean Blue (CAR)	N/A	N/A	N/A
Teal Blue (TLB)	N/A	N/A	N/A
Ciel Blue (CIE)		No Short, No Tall	N/A
Olive Branch (OLBA)		No Short, No Tall	N/A
Hunter Green (HUN)	N/A	N/A	N/A

BEST



READY FOR SERVICE.

In popular core colors with a subtle camo print, this line features the same soft, lightweight, amazingly comfortable fabric that makes Purple Label a favorite.



STRETCH FABRIC



BREATHABLE



EASY CARE

**JACQUARD FABRIC - 90 POLY/
10 SPANDEX**

Offers Women's and Men's fits, sizes XS to 3XL, with Petite pant options.

2352 JOURNEY Women's Mandarin Collar Boxy Top in Navy

COLOR AND STYLE MATRIX



2352 JOURNEY
Mandarin Collar Boxy Top

XS-3XL (26")



2353 JOY
Updated Curved V-Neck Top

XS-3XL (26½")



5030 DESTINI
Running Field Jacket

XS-3XL (24½")



9350 TATE
Flat Front Jogger Pant

XS-3XL (29")
[P] XS-XL (27½")



2360 JACK
Updated V-Neck Top

XS-3XL (29½")



9360 DREW
Full Elastic Waist Jogger Pant

XS-3XL (29")

WOMEN'S STYLES

MEN'S STYLES

Black						
Navy						
Pewter			N/A			
Olive						
Royal			N/A		N/A	N/A



2353 JOY Updated Curved V-Neck Top in Pewter and **9350 TATE** Flat Front Jogger Pant in Pewter



EFFORTLESSLY COOL AND COMFY.

Touch by Med Couture offers athletic polish and a range of styles, crafted from amazingly soft performance fabric.



360° STRETCH



MOISTURE WICKING



ULTRA SOFT

Touch

76 POLY/21 RAYON/3 SPANDEX
(HEATHERED: 72 POLY/22 RAYON/
6 SPANDEX)

Layers

100 POLY

Offers Women's fits, sizes XS to 5XL, with Petite/Tall pant options.

7488 Women's V-Neck Tuck-in Top and 7710 Jogger Yoga Pant in Slate (SLAT)

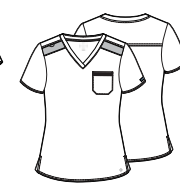
COLOR AND STYLE MATRIX

Touch



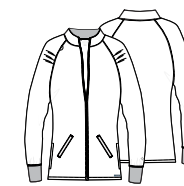
7459 V-Neck Shirttail Top

XS-5XL (27")



7448 V-Neck Tuck-in Top

XS-3XL (27½")



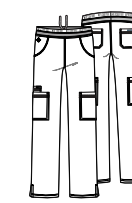
7660 Warm-up Jacket

XS-3XL (26")



7710 Jogger Yoga Pant

XS-3XL (28½")
[P] XS-XL (26½")
[T] XS-XL (31")



7739 Yoga Two-pocket Pant

XS-5XL (31")
[P] XS-2XL (29")
[T] XS-XL (33½")



8684 Fleece Warm-up Jacket

XS-3XL (26")

Layers

	WOMEN'S STYLES				WOMEN'S
Black (BLAC)					
Caribbean (CARI)				No Tall	N/A
Ceil (CEIL)			N/A		N/A
Cloud (CLOD)		N/A	N/A		N/A
Coral (CRAL)		N/A	N/A		N/A
Eggplant (EGPL)		N/A	N/A		N/A
Galaxy (GLXY)		N/A	N/A		N/A
Hunter (HNTR)		N/A	N/A		N/A
Lilac (LILA)			N/A		
Navy (NAVY)					N/A
Olive (OLIV)			N/A		N/A
Pink Punch (PKPH)		N/A	N/A		
Pewter (PWTR)					
Red (REDD)			N/A	No Tall	N/A
Royal (ROYL)					N/A
Slate (SLAT)			N/A		N/A
Teal (TEAL)			N/A		N/A
Wine (WINE)			N/A		N/A

BEST



PREMIUM COMFORT, GUY STYLE.

The Touch collection by RothWear offers a range of men's styles, in easy-care fabric that feels like the softest cotton.



360° STRETCH



MOISTURE WICKING



ULTRA SOFT

Touch

76 POLY/21 RAYON/3 SPANDEX
(HEATHERED: 72 POLY/22 RAYON/
6 SPANDEX)

Layers

100 POLY

Offers Men's fits, sizes XS to 3XL, with Short/Tall pant options.

7477 Men's Three-pocket Top and 7779 Straight Leg Pant in Slate (SLAT)

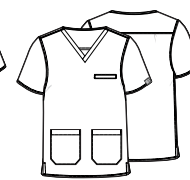
COLOR AND STYLE MATRIX

Touch



7478 One-pocket Top

XS-3XL (30")



7477 Three-pocket Top

XS-3XL (30")



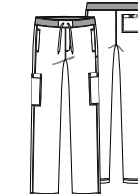
7678 Warm-up Jacket

XS-3XL (30¾")



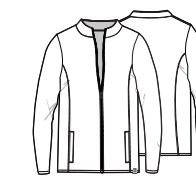
7777 Jogger Pant

XS-3XL (29½")
[S] XS-2XL (27½")
[T] XS-2XL (31½")



7779 Straight Leg Pant

XS-3XL (31")
[S] XS-3XL (28½")
[T] XS-2XL (33")



8688 Fleece Warm-up Jacket

XS-3XL (30¾")

Layers

	MEN'S STYLES				MEN'S
Black (BLAC)					
Ceil (CEIL)			N/A		N/A
Galaxy (GLXY)			N/A		N/A
Hunter (HNTR)			N/A		N/A
Navy (NAVY)					
Pewter (PWTR)					
Royal (ROYL)			N/A		N/A
Slate (SLAT)			N/A	No Tall	N/A
Wine (WINE)			N/A		N/A



7777 Men's Jogger Pant in Black (BLAC)



8688 Men's Fleece Warm-up Jacket in Pewter (PWTR)

LAB TESTED, GROUP APPROVED.

The experts in medical apparel since 1995, Careismatic offers a gold-standard range of lab coat options from brands healthcare pros know and trust.

LAB COATS

83403 Men's 40"
Dickies EDS Poplin Lab
Coat in White (WHT)



CLINICAL CONFIDENCE.

A range of lab and consultation coats from Cherokee and Dickies, in women's, men's and unisex fits.



GD360
Genuine Dickies Industrial Strength

XXS-5XL (43")

UNISEX

White (WHT)

80 POLY/ 20 COTTON TWILL
Offers a Unisex fit in sizes XXS to 5XL.



CK451/T
Lab Coat

XXS-5XL (28")
[T] XS-2XL (30")



CK452/T
Lab Coat

XXS-5XL (33")
[T] XS-2XL (35")



CK421
Lab Coat

XXS-5XL (37")



CK401/T
Lab Coat

XXS-5XL (30")
[T] XS-2XL (32")



CK412/T
Lab Coat

XXS-5XL (38")
[T] XS-2XL (40")

WOMEN'S STYLES

MEN'S STYLES

White (WHT)

65 POLY/35 COTTON BUILT-IN STRETCH TWILL
Offers Women's and Men's fits in sizes XXS to 5XL.



MEDICAL



84401
Dickies EDS Poplin Lab Coat

XS-3XL (28")



82402
Dickies EDS Twill Lab Coat

XS-3XL (30")



82401
Dickies EDS Twill Lab Coat

XS-3XL (37")



81404
Dickies EDS Poplin Lab Coat

XS-5XL (31")



83403
Dickies EDS Poplin Lab Coat

XS-5XL (40")

WOMEN'S STYLES

MEN'S

UNISEX

White (DWHZ)

84401 - 65 POLY/35 COTTON POPLIN
82401 AND 82402 - BRUSHED 60 COTTON/40 POLY TWILL
83403 AND 81404 - 65 POLY/35 COTTON POPLIN
Offers Women's, Men's, and Unisex fits in sizes XS to 5XL.

ELEVATED PERFORMANCE.

With thoughtful features and modern, sleek styling, these lab coats combine fashion, function, and professional elegance.



LEO 5150/T
The Minimalist

XS-5XL (30½")



LUKE 5151
The Minimalist

XXS-5XL (38")

WOMEN'S STYLES

White (WHT)



FIONA/A 5101
The Modernist

XXS-5XL (35")



LEO 5150/T
The Minimalist

XS-5XL (30½")



LUKE 5151
The Minimalist

XXS-5XL (38")



LOGAN 5100
The Modernist

XXS-5XL (38")

WOMEN'S: POLY/SPANDEX
(PERCENTAGES VARY ACCORDING TO STYLE)

MEN'S: POLY/RAYON/SPANDEX
(PERCENTAGES VARY ACCORDING TO STYLE)

Offers Women's and Men's fits in sizes XXS to 5XL.

WOMEN'S

MEN'S STYLES



WW450AB
Cherokee Workwear Revolution Tech

XS-5XL (30")



WW420AB
Cherokee Workwear Revolution Tech

XS-5XL (36")



WW400AB
Cherokee Workwear Revolution Tech

XS-5XL (32")



WW410AB
Cherokee Workwear Revolution Tech

XS-5XL (40")



***CK460/T**
Lab Coat

XXS-5XL (38")
[T] S-3XL (40")

WOMEN'S STYLES

MEN'S STYLES

UNISEX

White (WHT)

78 POLY/20 RAYON/2 SPANDEX TWILL
***65 POLY/35 COTTON BUILT-IN STRETCH TWILL**
Offers Women's, Men's, and Unisex fits in sizes XXS to 5XL.

BEST

EXQUISITE TO THE LAST DETAIL.

A precise, ergonomic fit, beautiful draping, and high-performance comfort fabric are just a few of the things that set Project Lab apart.

PROJECT LAB
by CHEROKEE UNIFORMS



WW350AB
Cherokee
Workwear
Revolution Tech

XS-5XL (40")

UNISEX

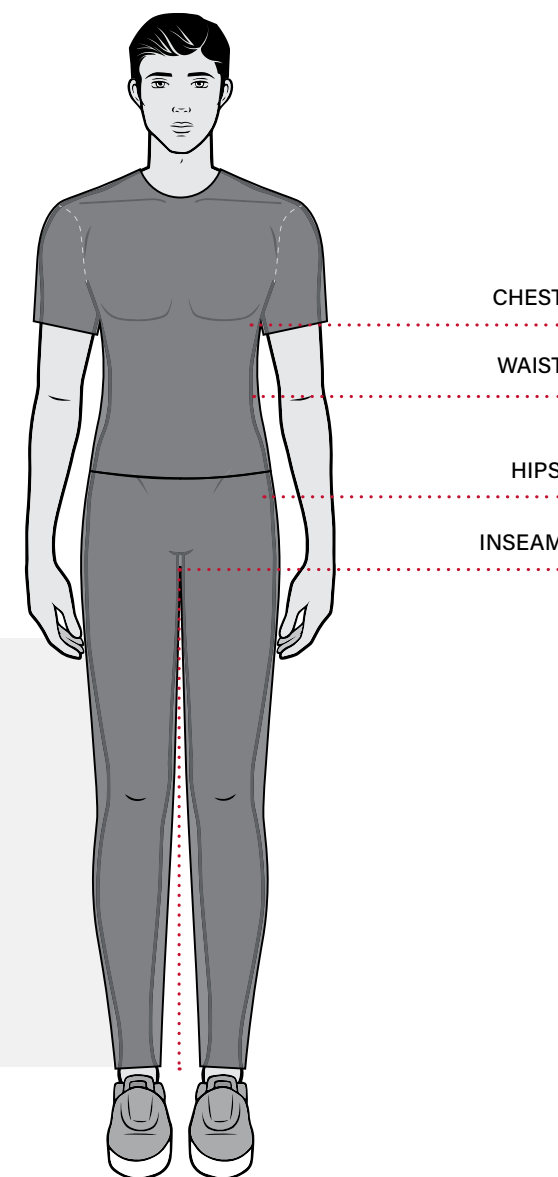
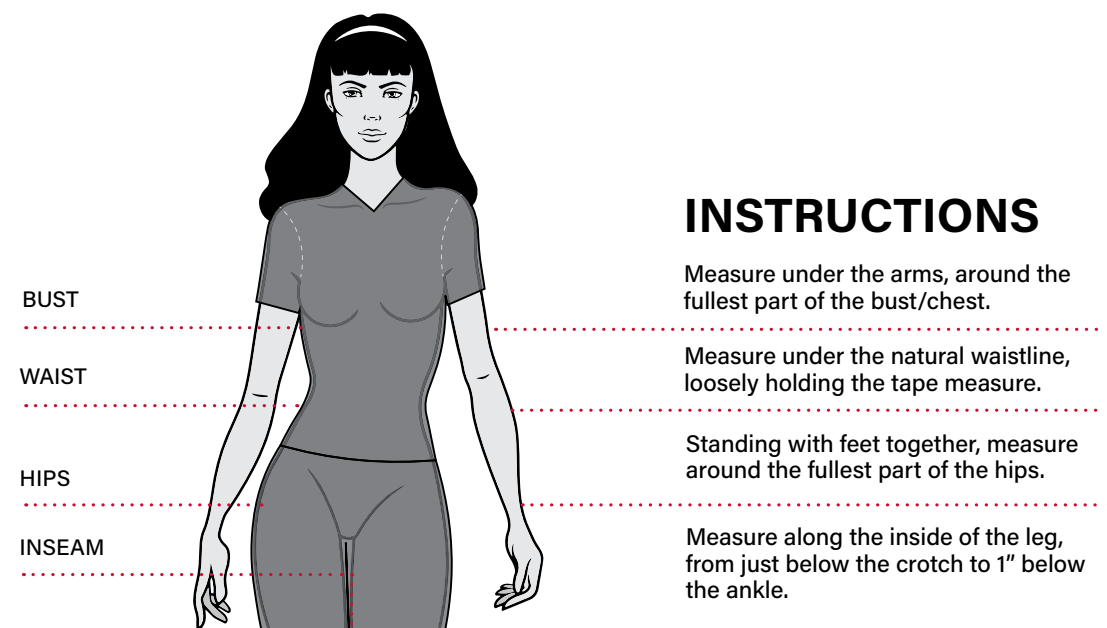
White (WHT)

78 POLY/20 RAYON/2 SPANDEX TWILL

Offers a Unisex fit in sizes XS to 5XL.



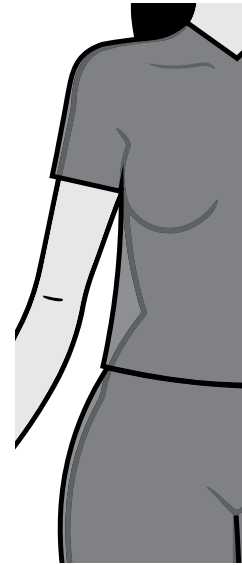
MEASUREMENT GUIDE



WOMEN'S TOP

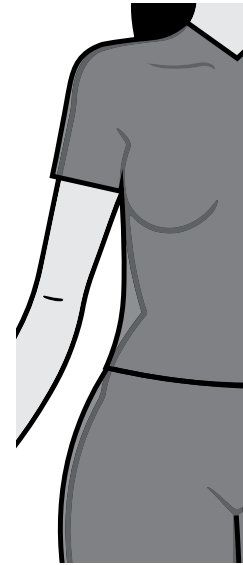
TRADITIONAL CLASSIC

Cut for maximum comfort



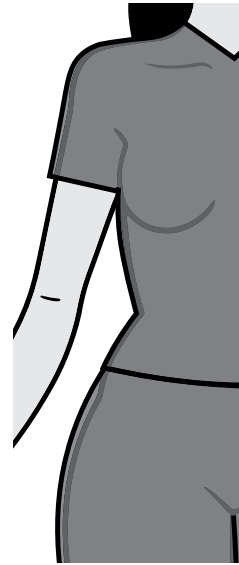
MODERN CLASSIC

Contours the body with ease



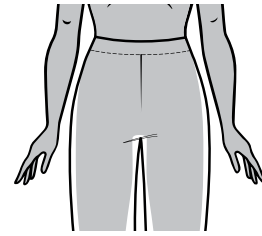
CONTEMPORARY

Contoured to your curves



WOMEN'S WAIST

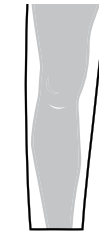
NATURAL RISE



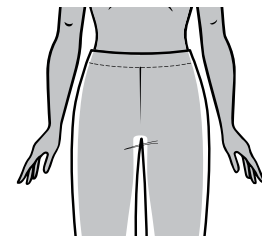
JOGGER



STRAIGHT



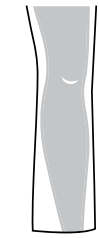
MID RISE



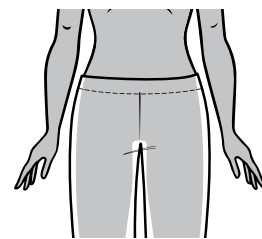
TAPERED



MODERATE FLARE BOOT CUT



LOW RISE



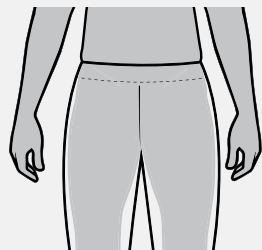
FLARE



WOMEN'S LEG

MEN'S WAIST

NATURAL RISE

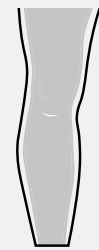


MEN'S LEG

CLASSIC



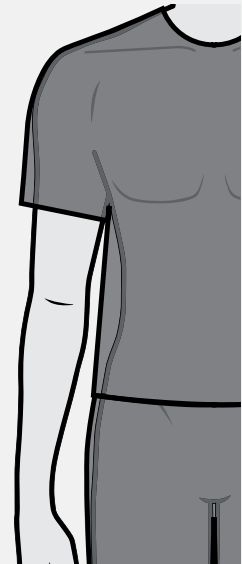
ATHLETIC



MEN'S TOP

CLASSIC

Relaxed fit for ultimate comfort



ATHLETIC

Tapered cut for a sleek silhouette



CHEROKEE SIZE CHARTS

All measurements are in inches.

WOMEN'S TRADITIONAL CLASSIC FIT/MATERNITY FIT

	XXS 2	XS 4-6	S 8-10	M 12-14	L 16-18	XL 20-22	2XL 24-26	3XL 28-30	4XL 32-34	5XL 34-38
Bust	34-35	36-37	38-39	40-42	43-45	46-48	49-52	53-56	57-60	61-64
Waist	25-26	27-28	29-30	31-33	34-36	37-39	40-43	44-47	48-51	52-55
Hips	34-35	36-37	38-39	40-42	43-45	46-48	49-52	53-56	57-60	61-64

Inseam: Regular 30-31", Petite 27½-28½", Tall 33-34"

WOMEN'S MODERN CLASSIC FIT

	XXS 0	XS 2-4	S 6-8	M 10-12	L 14-16	XL 18-20	2XL 22-24	3XL 26-28	4XL 30-32	5XL 34-36
Bust	33-34	35-36	37-38	39-41	42-44	45-47	48-51	52-55	56-59	60-63
Waist	25-26	27-28	29-30	31-33	34-36	37-39	40-43	44-47	48-51	52-55
Hips	34-35	36-37	38-39	40-42	43-45	46-48	49-52	53-56	57-60	61-64

Inseam: Regular 30-31", Petite 27½-28½", Tall 33-34"

WOMEN'S CONTEMPORARY FIT

	XXS 0	XS 2-4	S 6-8	M 10-12	L 14-16	XL 18-20	2XL 22-24	3XL 26-28	4XL 30-32	5XL 34-36
Bust	32-33	34-35	36-37	38-40	41-43	44-46	47-50	51-54	55-58	59-60
Waist	25-26	27-28	29-30	30-32	34-36	37-39	40-43	44-47	48-51	52-55
Hips	33-34	35-36	37-38	39-40	42-44	45-47	48-51	52-55	56-59	61-64

Inseam: Regular 30-31", Petite 27½-28½", Tall 33-34"

MEN'S TRADITIONAL FIT

	XS 2-4	S 6-8	M 10-12	L 14-16	XL 18-20	2XL 22-24	3XL 26-28	4XL 30-32	5XL 34-36
Chest	35-37	38-40	41-43	44-47	48-51	52-55	56-59	60-63	64-67
Waist	28-30	31-33	34-36	33-36	41-44	45-48	49-52	53-56	57-60
Hips	34-36	37-39	40-42	43-46	47-50	51-54	55-58	59-62	63-66

Inseam: Regular 31-32", Short 29-30", Tall 34-35", Ultra Tall (unhemmed) 36"

MEN'S MODERN FIT

	XS 2-4	S 6-8	M 10-12	L 14-16	XL 18-20	2XL 22-24	3XL 26-28	4XL 30-32	5XL 34-36
Chest	33-35	36-38	39-41	42-45	46-49	50-53	54-57	58-61	62-65
Waist	26-28	29-31	32-34	35-38	39-41	42-45	46-49	50-53	54-57
Hips	32-34	35-37	38-40	41-44	45-48	49-52	53-56	57-60	61-64

Inseam: Regular 31-32", Short 29-30", Tall 34-35", Ultra Tall (unhemmed) 36"

UNISEX TRADITIONAL FIT

	XXS 0	XS 2-4	S 6-8	M 10-12	L 14-16	XL 18-20	2XL 22-24	3XL 26-28	4XL 30-32	5XL 34-36
Chest	32-34	35-37	38-40	41-43	44-47	48-51	52-55	56-59	60-63	64-67
Waist	25-27	28-30	31-33	34-36	37-40	41-44	45-48	49-52	53-56	57-60
Hips	32-34	35-37	38-40	41-43	44-47	48-51	52-55	56-59	60-63	64-67

Inseam: Regular 31-32", Short 29-30", Tall 34-35", Ultra Tall (unhemmed) 36"

UNISEX MODERN FIT

	XXS 0	XS 2-4	S 6-8	M 10-12	L 14-16	XL 18-20	2XL 22-24	3XL 26-28	4XL 30-32	5XL 34-36
Chest	30-32	33-35	36-38	39-41	42-45	46-49	50-53	54-57	58-61	62-65
Waist	23-25	26-28	29-31	32-34	35-38	39-41	42-45	46-49	50-53	54-57
Hips	30-32	33-35	36-38	39-41	42-45	46-49	50-53	54-57	58-61	62-65

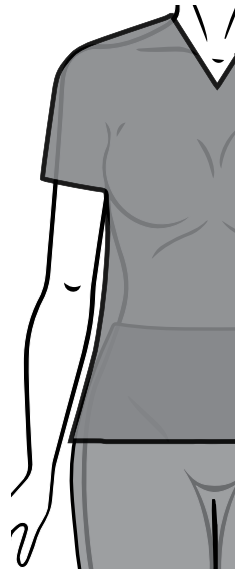
Inseam: Regular 31-32", Short 29-30", Tall 34-35", Ultra Tall (unhemmed) 36"

Use this chart to determine your size. If one of your measurements is between two sizes, order the smaller size for a tighter fit or the larger size for a looser fit. If your measurements for hips and waist correspond to two different suggested sizes, order the one indicated by your hip measurement.

WOMEN'S TOP

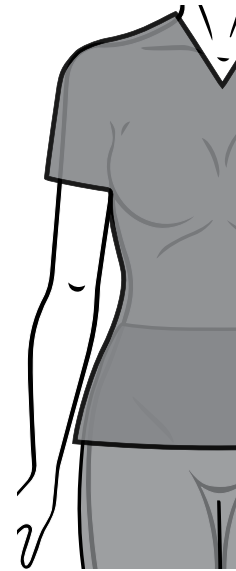
MODERN CLASSIC

Contours the body with ease



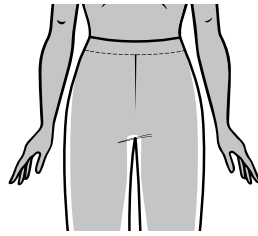
CONTEMPORARY

Contoured to your curves

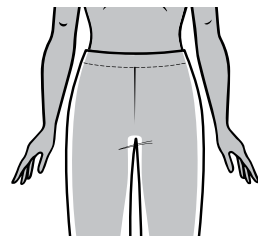


WOMEN'S WAIST

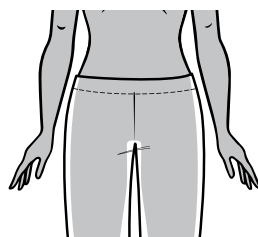
NATURAL RISE



MID RISE

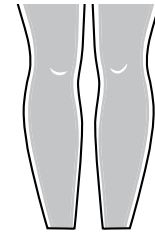


LOW RISE

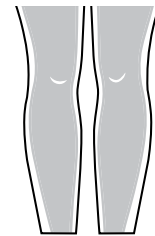


WOMEN'S LEG

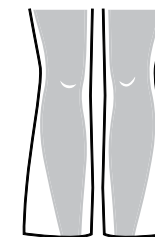
JOGGER



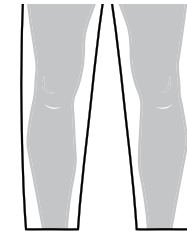
TAPERED



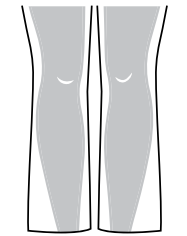
FLARE



STRAIGHT



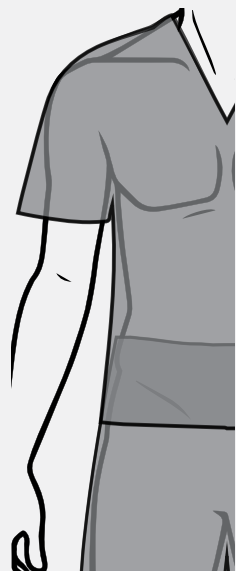
MODERATE FLARE BOOT CUT



MEN'S TOP

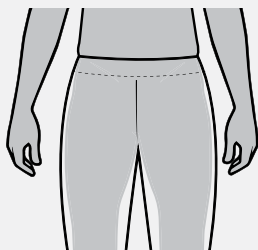
CLASSIC

Relaxed fit for ultimate comfort



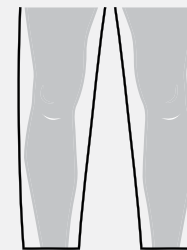
MEN'S WAIST

NATURAL RISE

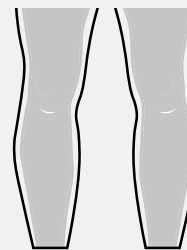


MEN'S LEG

CLASSIC



ATHLETIC



DICKIES SIZE CHARTS

All measurements are in inches.

WOMEN'S MODERN CLASSIC / CONTEMPORARY FIT

	XXS	XS	S	M	L	XL	2XL	3XL	4XL	5XL	6XL
	0	2-4	6-8	10-12	14-16	18-20	22-24	26-28	30-32	34-36	36-38
Bust	31-32	33-34	35-36	37-39	40-43	44-47	48-51	52-55	56-59	60-63	64-67
Waist (Mid Rise)	23-24	25-26	27-28	29-31	32-35	36-39	40-43	44-47	48-51	52-55	56-59
Hips	33-34	35-36	37-38	39-41	42-45	46-49	50-53	54-57	58-61	62-65	66-69
Inseam: Regular 30½", Petite 28", Tall 33½"											

UNISEX FIT

	XS	S	M	L	XL	2XL	3XL	4XL	5XL
	2-4	6-8	10-12	14-16	18-20	22-24	26-28	30-32	34-36
Chest	33-34	35-37	38-40	41-44	45-48	49-52	53-56	57-60	61-64
Waist (Mid Rise)	25-26	27-29	30-32	33-36	37-40	41-44	45-48	49-52	53-57
Hips	34-35	36-38	39-41	42-45	46-49	50-53	54-57	58-61	62-65
Inseam: Regular 31", Short 28½", Tall 34"									

MEN'S FIT

	XS	S	M	L	XL	2XL	3XL	4XL	5XL	6XL
Chest	33-35	36-38	39-41	42-45	46-49	50-53	54-57	58-61	62-65	66-69
Waist (Mid Rise)	25-26	27-29	30-32	33-36	37-40	41-44	45-48	49-52	53-57	58-61
Hips	33-35	36-38	39-41	42-45	46-49	50-53	54-57	58-61	62-65	66-69
Inseam: Regular 32", Short 29½", Tall 35"										

Use this chart to determine your size. If one of your measurements is between two sizes, order the smaller size for a tighter fit or the larger size for a looser fit. If your measurements for hips and waist correspond to two different suggested sizes, order the one indicated by your hip measurement.

HEALING HANDS SIZE CHARTS

All measurements are in inches.

WOMEN'S PURPLE LABEL, 360, AND KNITS FIT

	XXS	XS	S	M	L	XL	2XL	3XL	4XL	5XL
	00	0-2	4-6	8-10	12-14	16-18	20-22	23-24	25-26	27-28
Bust	27-30	30-33	33-35	35-37	37-40	40-43	43-47	47-51	51-55	55-59
Waist	21-24	24-26	26-28	28-30	30-33	33-36	36-40	40-44	44-48	48-52
Hips	31-34	34-36	36-38	38-40	40-43	43-46	46-50	50-54	54-58	58-62
Inseam: Regular 31", Petite 29", Tall 33"										
Height: Regular 5'3" to 5'7", Petite: 4'10" to 5'3", Tall 5'8" to 6'2"										

WOMEN'S HH WORKS BY HEALING HANDS FIT

	XXS	XS	S	M	L	XL	1XL	2XL	3XL	4XL	5XL
	00	0-2	4-6	8-10	12-14	16-18	20	21-22	23-24	25-26	27-28
Bust	30-31	32-33	34-35	36-37	38-40	41-43	44-46	47-49	50-52	53-55	56-59
Waist	21-23	24-25	26-27	28-30	31-33	34-36	36.5-38.5	39-41	42-44	45-48	49-52
Hips	32-33	34-35	36-37	38-40	41-43	44-46	46.5-48.5	49-51	52-54	55-58	56-62
Inseam: Regular 31", Petite 29", Tall 33"											
Height: Regular 5'3" to 5'7", Petite: 4'10" to 5'3", Tall 5'8" to 6'2"											

MEN'S PURPLE LABEL, HH WORKS, AND 360 FIT

	XS	S	M	L	XL	2XL	3XL	4XL	5XL
	30-32	34-36	38-40	42-44	46-48	50-52	54-56	58-60	62-64
Chest	32-34	36-37	38-40	42-44	46-48	50-52	54-56	58-60	62-64
Waist	27-28	29-31	32-34	35-38	39-42	43-46	47-50	51-54	55-58
Hips	32-34	35-37	38-40	41-44	45-48	49-52	53-56	57-60	61-64
Inseam: Regular 32", Petite 29½", Tall 35"									
Height: Regular 5'9" to 6'1", Short 5'6" to 5'8", Tall 6'2" to 6'5"									

Use this chart to determine your size. If one of your measurements is between two sizes, order the smaller size for a tighter fit or the larger size for a looser fit. If your measurements for hips and waist correspond to two different suggested sizes, order the one indicated by your hip measurement.

MED COUTURE SIZE CHARTS

All measurements are in inches.

WOMEN'S MISSY FIT

	XXS	XS	S	M	L	XL	2XL	3XL	4XL	5XL
	0	0-2	6-8	10-12	14-16	18-20	22-24	26-28	30-32	34-36
Bust	32	33-34	35-36	37-39	40-43	44-47	48-51	52-55	56-59	60-63
Waist	24	25-26	27-28	29-31	23-35	36-39	40-43	44-47	48-51	52-55
Hips	34	35-36	37-38	39-41	33-35	46-49	50-53	54-57	58-62	63-67
Inseam: Regular 30-31", Petite 28-29", Tall 32½-33½" (approximate)										
Height: Regular 5'4½" to 5'7", Petite 5'4" and under, Tall 5'9" to 5'11"										

MEN'S ROTHWEAR FIT

	XS	S	M	L	XL	2XL	3XL
	32-34	35-37	38-40	42-44	46-48	50-52	54-56
Chest	32-35	35-37	38-40	42-44	46-48	50-52	54-56
Waist	25-27	28-30	31-33	35-37	39-41	43-45	47-49
Hips	32-34	35-37	38-40	42-44	46-48	50-52	54-56
Inseam: Regular 31", Short 28½", Tall 33"							

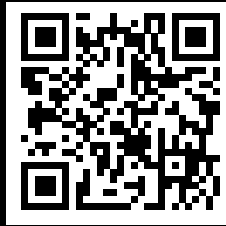
UNISEX FIT

	XS	S	M	L	XL	2XL	3XL	4XL	5XL
	30-32	34-36	38-40	42-44	46-48	50-52	54-56	58-60	62-64
Chest	32-34	35-37	38-40	42-44	46-48	50-52	54-56	58-60	62-64
Waist	25-27	28-30	31-33	35-37	39-41	43-45	47-49	51-53	55-57
Hips	32-34	35-37	38-40	42-44	46-48	50-52	54-56	58-60	62-64
Inseam: Regular 30", Petite 27½", Tall 32" (approximate)									

Use this chart to determine your size. If one of your measurements is between two sizes, order the smaller size for a tighter fit or the larger size for a looser fit. If your measurements for hips and waist correspond to two different suggested sizes, order the one indicated by your hip measurement.



Scan to view online.



119 Colorado Ave
Santa Monica, CA 90401
careismatic.com

8046/FEB23